



Safety Sync - UP

October 2022

Jack C. Hanagriff, Coordinator
Rail Safety and Mobility
East End District

Purpose

- Identify Groups Conducting Safety Programs in East Houston
- Program Type
- Frequency
- Locations Served

Neighborhoods of Concern

Second Ward

Eastwood

Magnolia Park

Pecan Park

Lawndale/Wayside

Gulfgate/Pine Valley

Fifth Ward

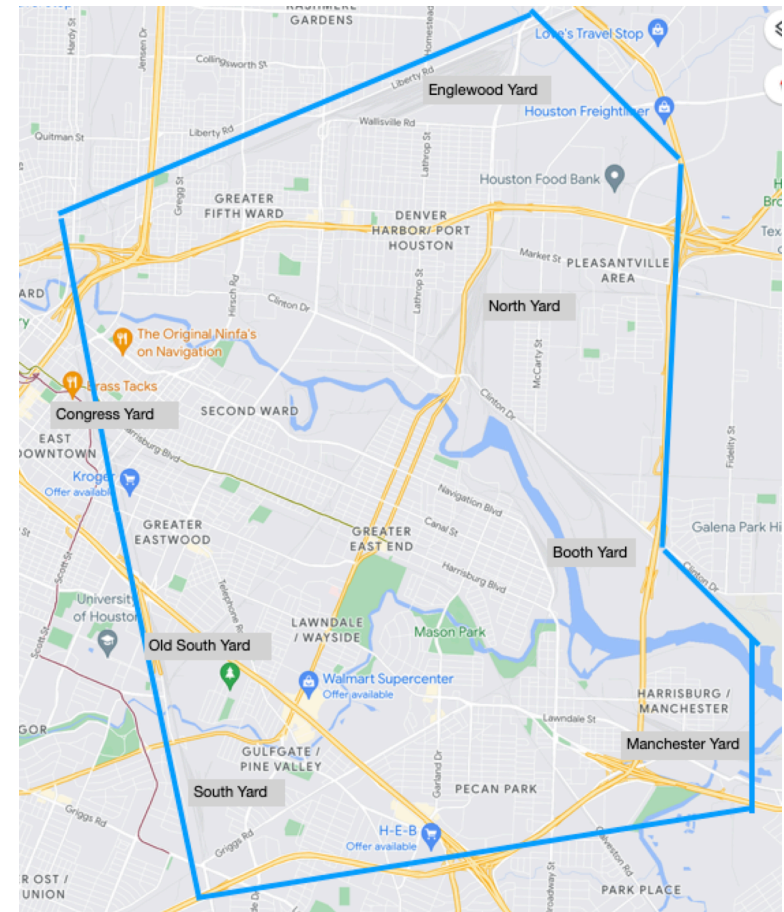
Denver Harbor

Pleasantville

South Park

Manchester

OST/South Union

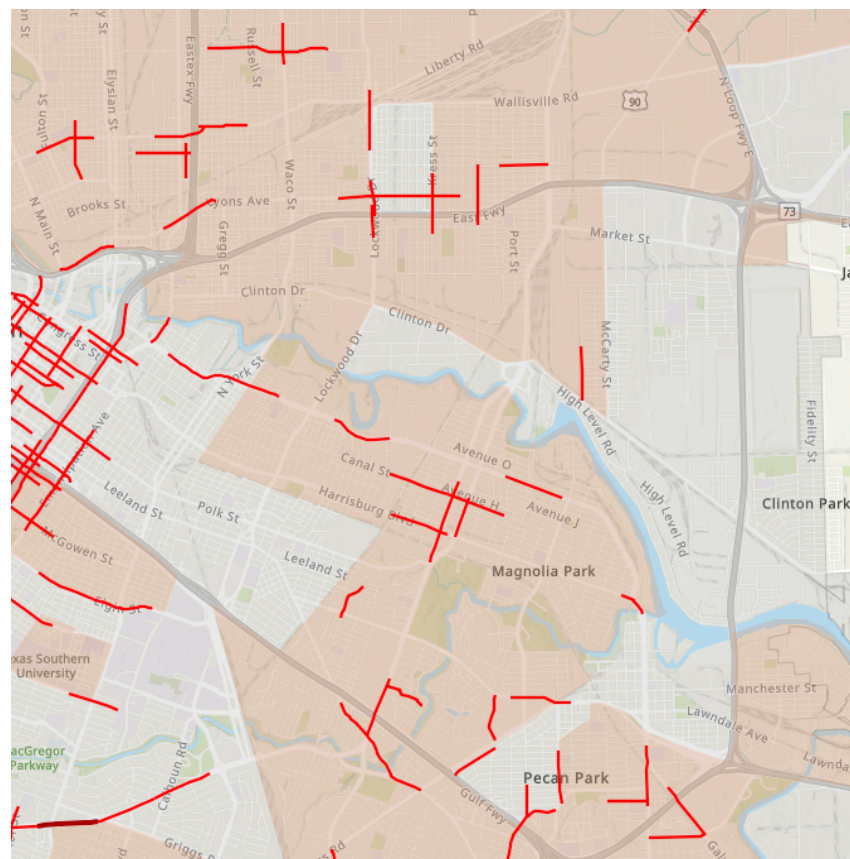


High Injury Network

Traffic Injury Research Foundation

The High Injury Network (HIN) represents 6% of Houston streets which account for 60% of traffic deaths and serious injuries

- 2020-2021
 - 38% increase in crash fatalities
- 2016-2020
 - 298 Serious Injuries
 - 1,478 Minor Injuries



Road Safety System

Traffic Injury Research Foundation

- Surveyed 12 neighborhoods in the East Houston area
- Diverse stakeholders: teachers, first responders, city council offices, business owners, professional drivers, and residents
- Key Takeaways
 - Lack of consistency in road safety activities
 - Limited awareness of safety programs
 - Siloed data sharing efforts
 - No identified funding mechanism

 Desjardins  FOUNDATION

TIRF

Action 2 Zero

The tool was designed to assist communities to:

- > track progress achieving their strategic road safety plan and assess their community rating;
- > determine what strategies and initiatives have been implemented in the community and are working well; and,
- > prioritize improvements to address gaps and achieve their strategic road safety plan and 5-star community status.

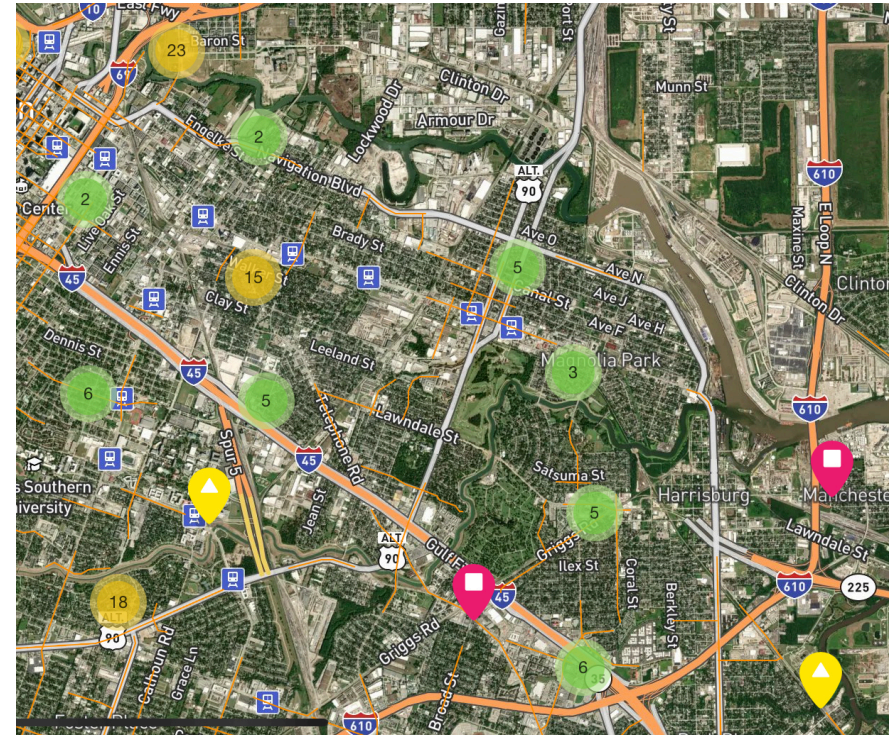
Road Safety Concerns



- Unsafe railroad crossings
- Unsafe sidewalks and bicycle lanes
- Speeding
- Limited or no infrastructure to make roads safer
- Improper or no road maintenance

Road Safety Treatments

- Tracking Roadway Concerns in East Houston
- Blocked Crossings
- Sight Distance Limitations
- Dangerous Intersections
- Bike/ Pedestrian Access



<https://www.letstalkhouston.org/vision-zero/maps/vision-zero-map-tool>

Safe Routes

- Identify hazards along essential routes in proximity to crossing
 - School
 - Clinic
 - Community Center
 - Food Store
- Conduct studies for treatments to reduce impacts
 - Abatement
 - Operational Changes
 - Infrastructure Improvement
 - Awareness/Education



Crosswalk the Deliverables

Bicycle Safety

Bus Safety (School & Transit)

Driver Safety

Pedestrian Safety

Vehicle Occupant Protection

Rail Safety (Commuter & Freight)



Let's Focus Our Efforts

- Baker Ripley
- Tejano Family Center
- Wish Community Family Center
- Denver Harbor Multi-service Center
- Tijerina Elementary School
- Franklin Elementary School
- South Yard Elementary School
- Sanchez Elementary School