

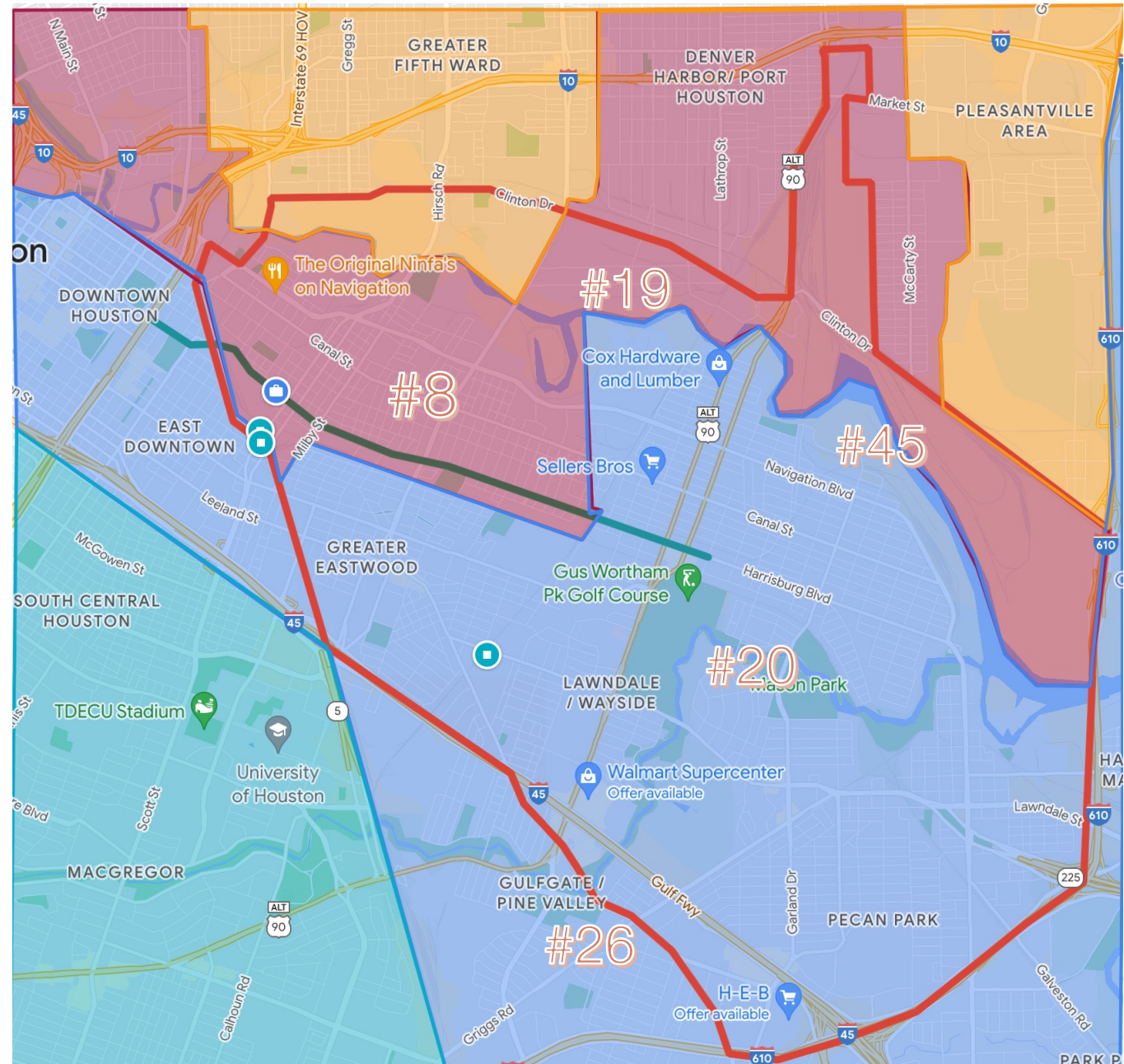
Rail Safety Taskforce
October 2023



Jack C. Hanagriff, Manager
Road Safety and Mobility Program
East End District

East Houston Focus

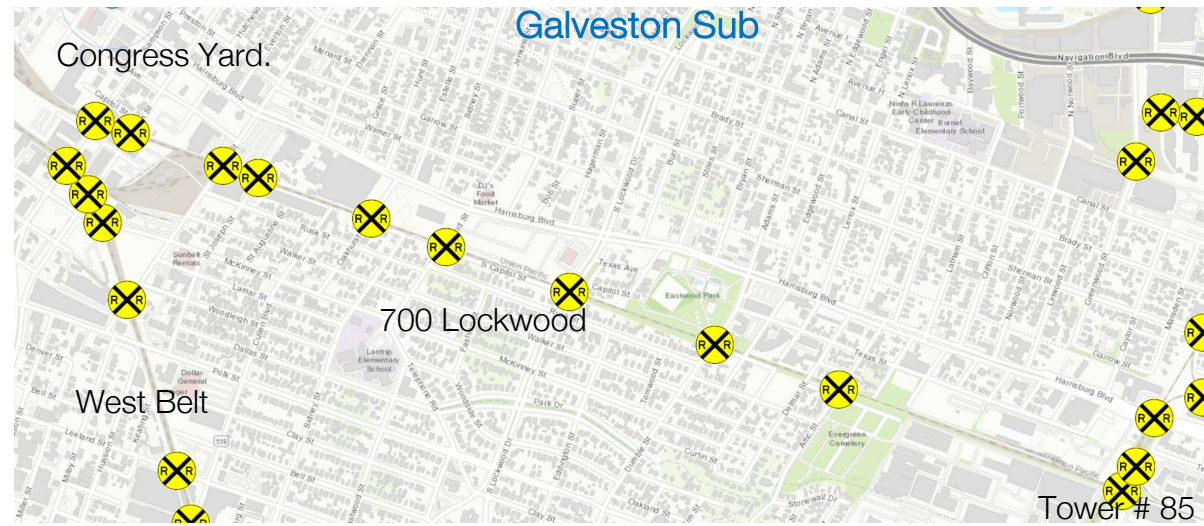
- Continue to identify needs and address concerns related to train operations impacting quality of life in East Houston Neighborhoods
- Identify other road safety and mobility concerns within the East Houston area



Railroad Crossing Sensor Activity

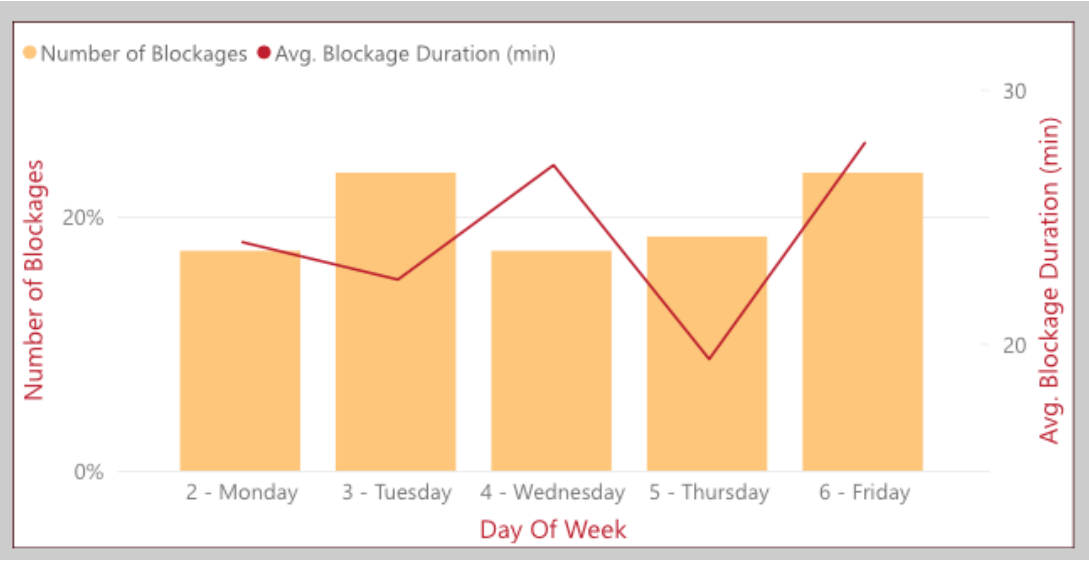
September 2023	Daily Crossing Occupancy	Average Occupancy	Avg. Daily Blockage	Longest Occupancy
Commerce Street	23	10 Minutes	4 Hours	3 Hours (09/03/23 @6:13 AM (Non-Peak))
Lockwood	8	15 Minutes	2 Hours	5.5 Hours (09/08/23 @7:21 PM (Non-Peak))
York	15	7 Minutes	2 Hours	5.5 Hours (09/08/23 @7:16 PM (Non-Peak))
Market (5900)	32	5 Minutes	3 Hours	1.5 Hours (09/30/23 @10:35 PM (Non- Peak))
Polk (5400)	11	9 Minutes	1 Hour	2 Hours (09/02/23 @2:21 AM (Non-Peak))
Leeland/Cullen	26	7 Minutes	3 Hours	1.5 Hours (09/05/23 @10:54 AM (Non-Peak))
Hirsch Road	9	12 Minutes	2 Hours	6 Hours (09/02/23 @4:30 AM (Non-Peak))

August	Daily Crossing Occupancy	Average Occupancy	Average Daily blockage (hr)	Longest Occupancy
Commerce Street	21	11 Minutes	4 Hours	1.5 Hours (Peak)
Lockwood	7	15 Minutes	2 Hours	3 Hours (Peak)
York	22	4 Minutes	2 Hours	3 Hours (Peak)
Market (5900)	39	4 Minutes	3 Hours	3 Hours (Non-Peak)
Polk (5400)	7	12 Minutes	2 Hours	5.5 Hours (Non-Peak)
Leeland/Cullen	27	7 Minutes	3 Hours	2.5 Hours (Non-Peak)
Hirsch Road	7	16 Minutes	2 Hours	5 Hours (Non-Peak)



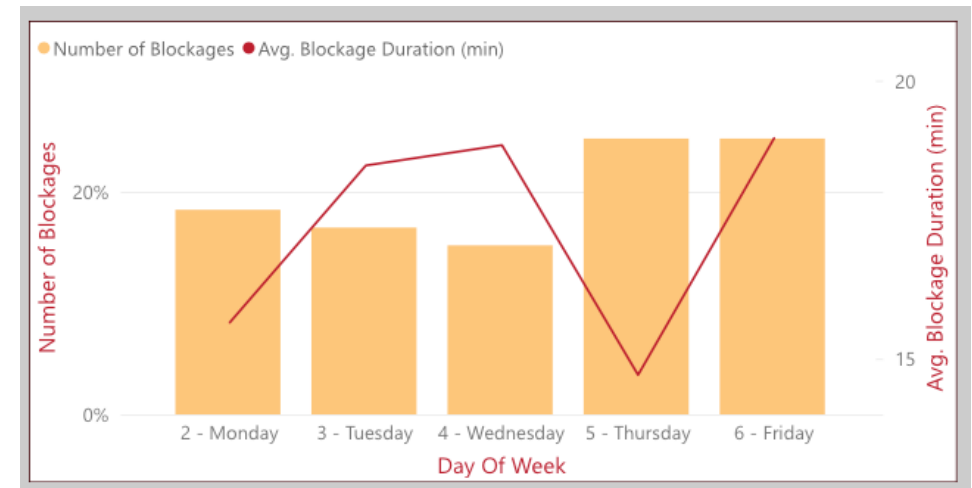
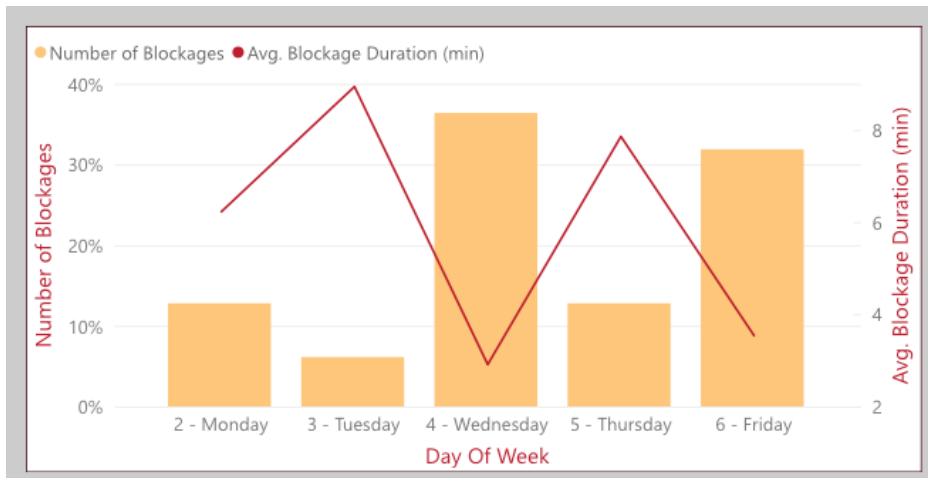
Analysis Areas

All Traffic	Jan-March	April-June	July-September
Longest Blockage	Not installed	11-hours	11-Hours
Avg. Number of Crossings Occupied		5	6
Avg. Daily Blockage (hr)		3	2
Avg. Blockage Duration (min)		34	24 Minutes
Peak Times (6-8 AM & 3-6PM)	Jan-March	April-June	July - September
Longest Blockage	Not installed	3.5 Hours	3.5
Avg. Number of Crossing Occupied		3/day	2/day
Avg. Daily Blockage (hr)		1 hour	1 Hour
Avg. Blockage Duration (min)		25 minutes	24 Minutes



Belt Main

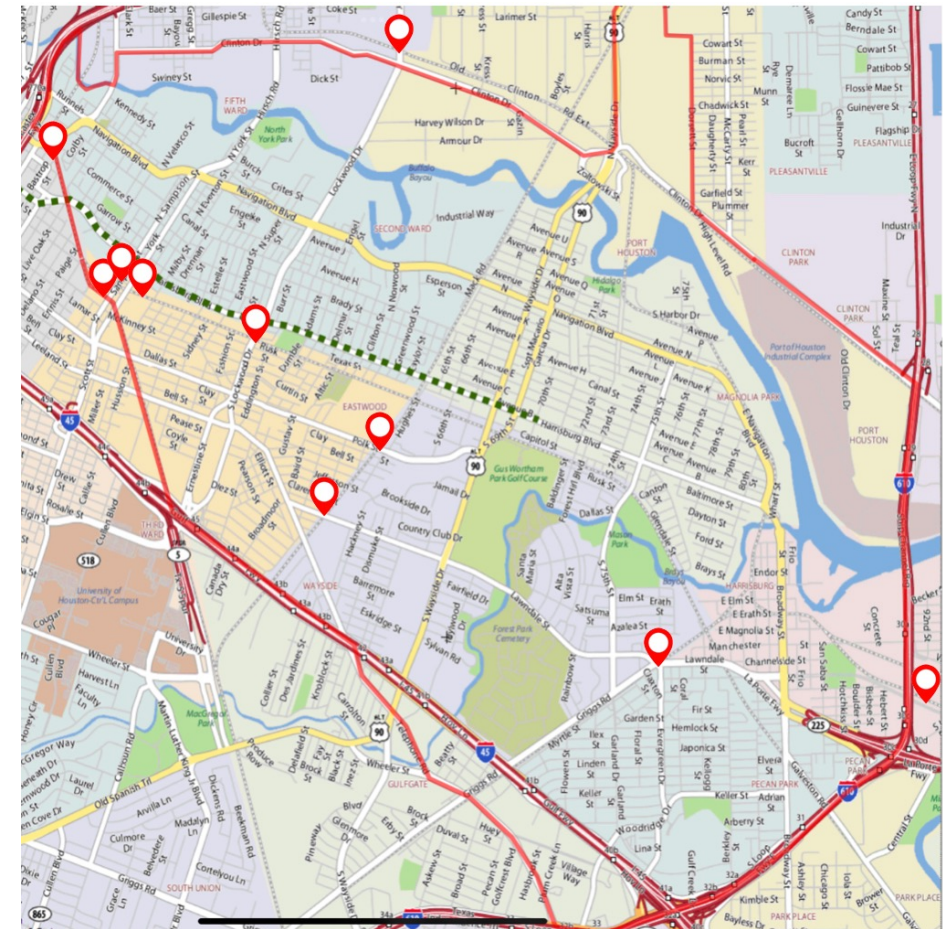
York Street				700 S. Lockwood			
All Traffic	Jan-March	April-June	July - September	All Traffic	Jan-March	April-June	July - September
Longest Blocakge	11 Hours	5.5 Hours	5.5 Hours	Longest Blocakge	11 Hours	3.5 Hours	5.5 Hours
Average number of occupied crossings/day	12	12	12	Average number of occupied crossings	5	5	5
Avg. Daily Blockage (hr)	2	1	1	Avg. Daily Blockage (hr)	2	1	1
Avg. Blockage Duration (min)	7 Minutes	6 Minutes	5 Minutes	Avg. Blockage Duration (min)	20 Minutes	15 Minutes	15 Minutes
<i>Peak Times (6-8 AM & 3-6PM)</i>				<i>Peak Times (6-8 AM & 3-6PM)</i>			
	Jan-March	April - June	July - September		Jan-March	April - June	July - September
Longest Blocakge	1.5 Hours	1 Hour	3 Hours	Longest Blocakge	1 Hour	1.5 Hours	3 Hours
Avg. Number of Occupied Crossings	5	6	9	Average number of Occupied Crossings	2	2	2
Avg. Daily Blockage (hr)	0	0	1 Hour	Avg. Daily Blockage (hr)	0	0	1 Hour
Avg. Blockage Duration (min)	5 Minutes	5 minutes	5 Minuts	Avg. Blockage Duration (min)	11 Minutes	13 Minutes	17 Minutes



Smart Railroad Cameras & Sensors



- Continue to Monitor 18 Locations
- Scale the Project Regionally (Harris County & Fort Bend County)
- Testing Data at Transtar
- Piloting Advanced Warning Sign



Transportation Safety Initiatives

A collaborated effort with transportation safety organizations and academia to implement a road and rail safety awareness strategy for the East Houston Area

Current Initiatives:

- Safe Streets For All - Safety Action Plan
- Texas A&M Crossing Bypass -Started
- US Road Assessment Program – assess and prioritize transportation safety and infrastructure conditions in the East End District. - Started
- Develop a Road & Rail Safety Tool Kit for neighborhood schools, community centers, & clinics

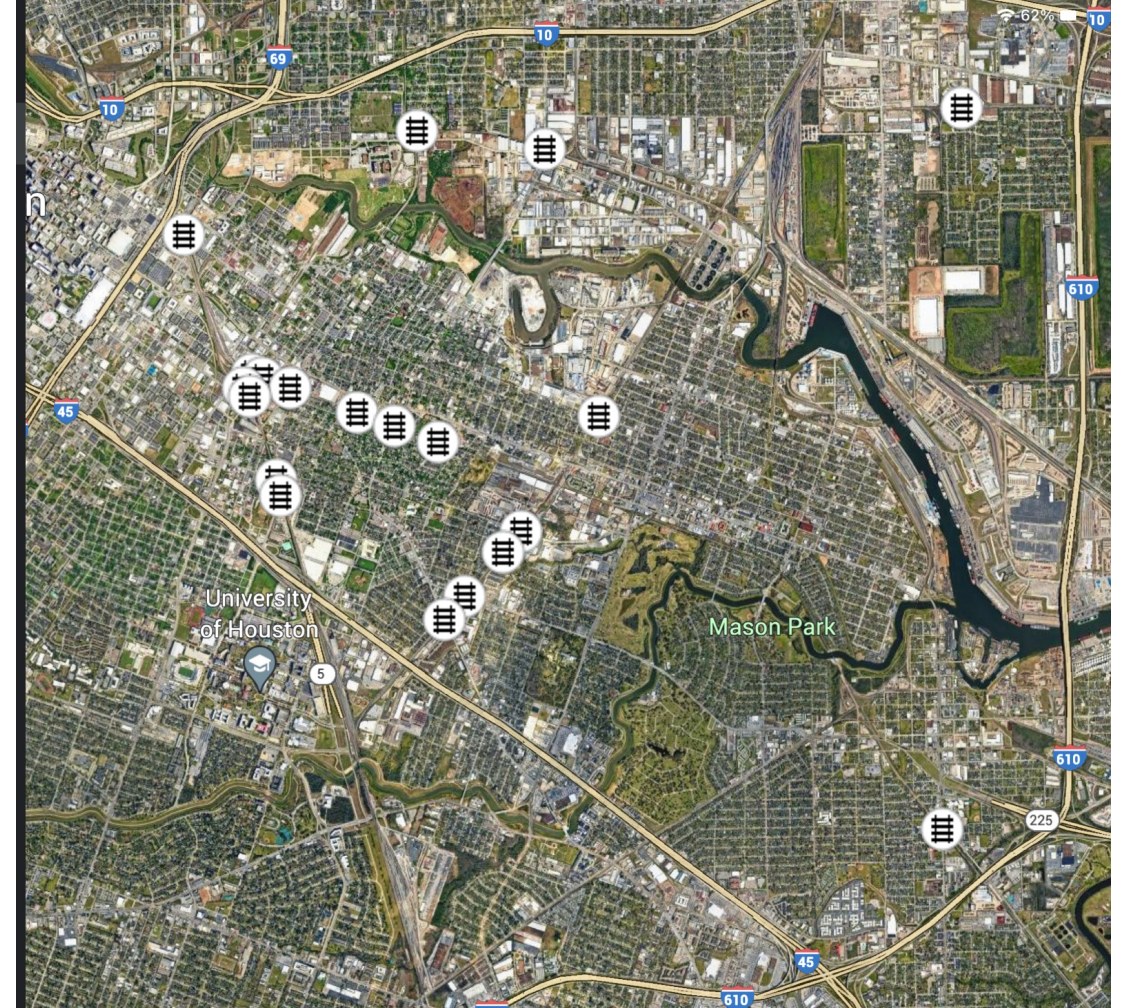


Texas A&M Capstone

Identify alternate routes and evaluate treatments that can assist motorists in by-passing Blocked Railroad Crossings.

Objectives:

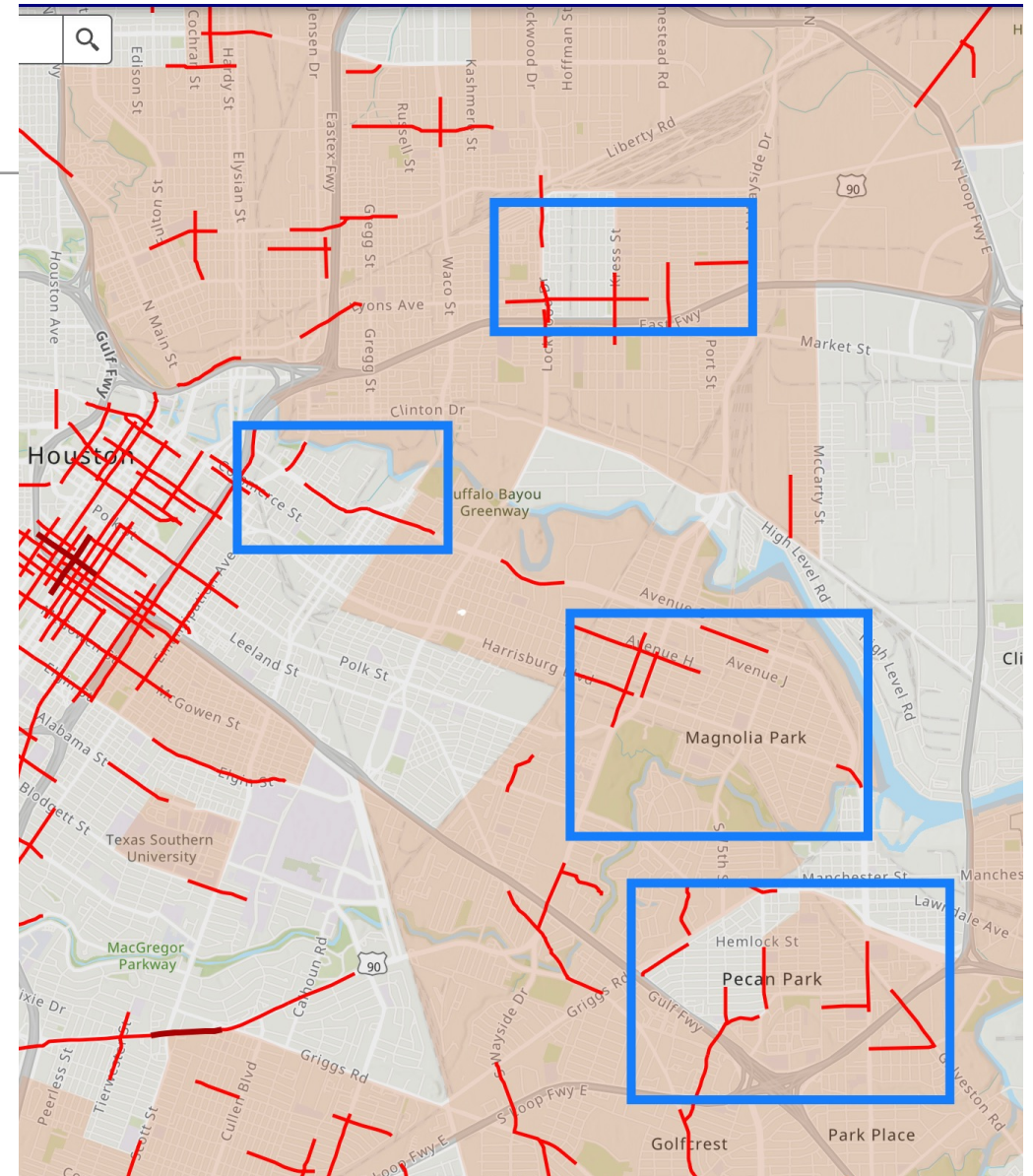
- Reduce traffic congestion and minimize “boxed in” motorist
- Manage driver expectation by offering wayfinding signage along alternate routes
- Reduce unsafe activities, e.g., racing the train, high speed driving, and etc.
- Deliver traffic calming opportunities through route guidance



Community Ties

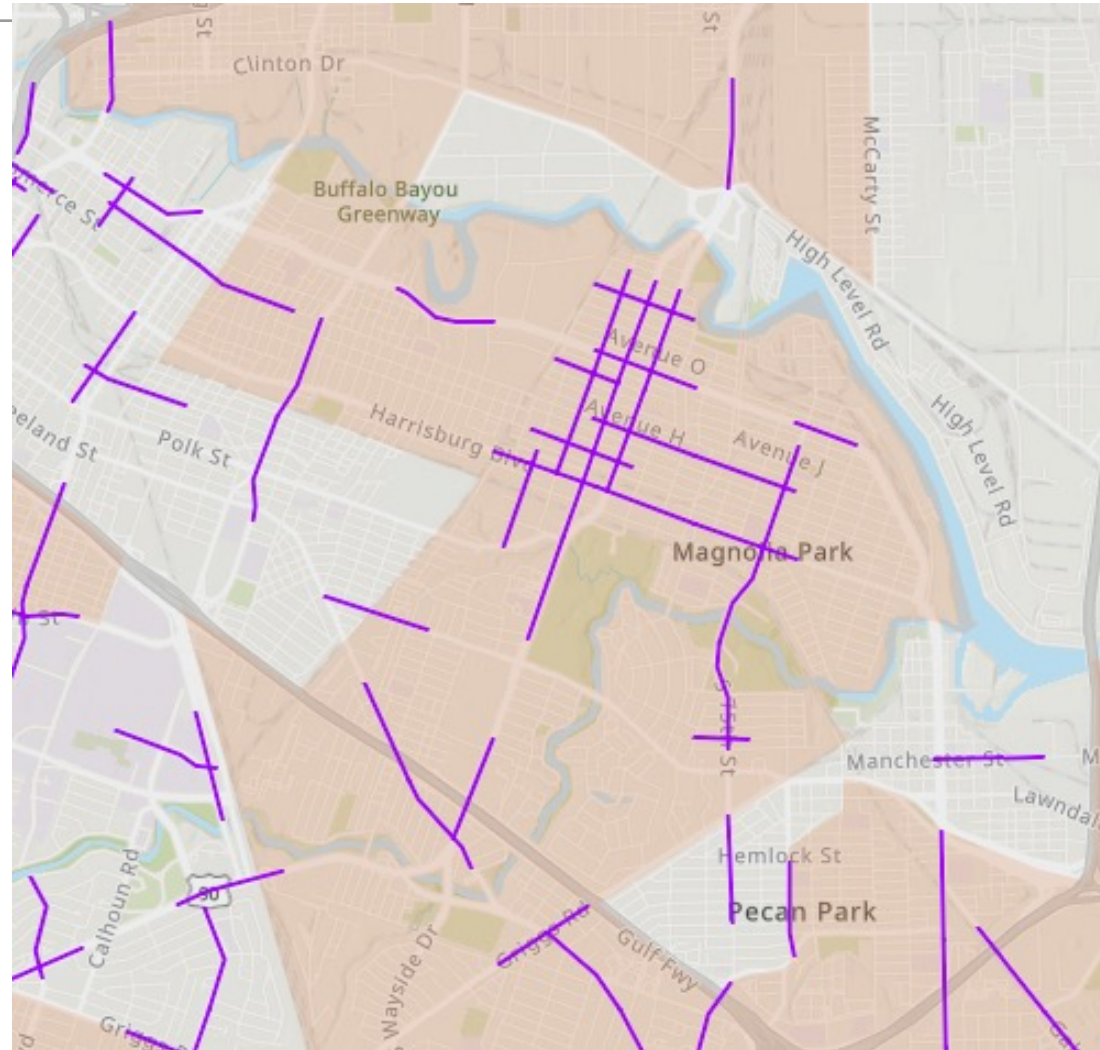
Monetary Award to remove pedestrian barriers related to vegetation, trash, other debris that impede the use of sidewalks and other paths

- East End District (2nd Ward, Magnolia Park, Pecan Park, Possible 5th Ward)
- Neighborhoods in the High Injury Network
- Routes to school, parks, centers and clinics



Houston High Injury Network

9% of Houston Roads Accounts for 58% of transportation related fatalities or serious injuries



Community Engagement

- Safe Streets Technical Advisory Committee
- Pedestrian Safety Group
- EED Bicycle Advisory Committee
- Rail Safety Task Force
- Seguridad del Tráfico en las Carreteras





Thank You

Jack C. Hanagriff, Manager
Road Safety and Mobility Program
Email: Jack@eastenddistrict.com