

Rail Safety Taskforce  
September 2023

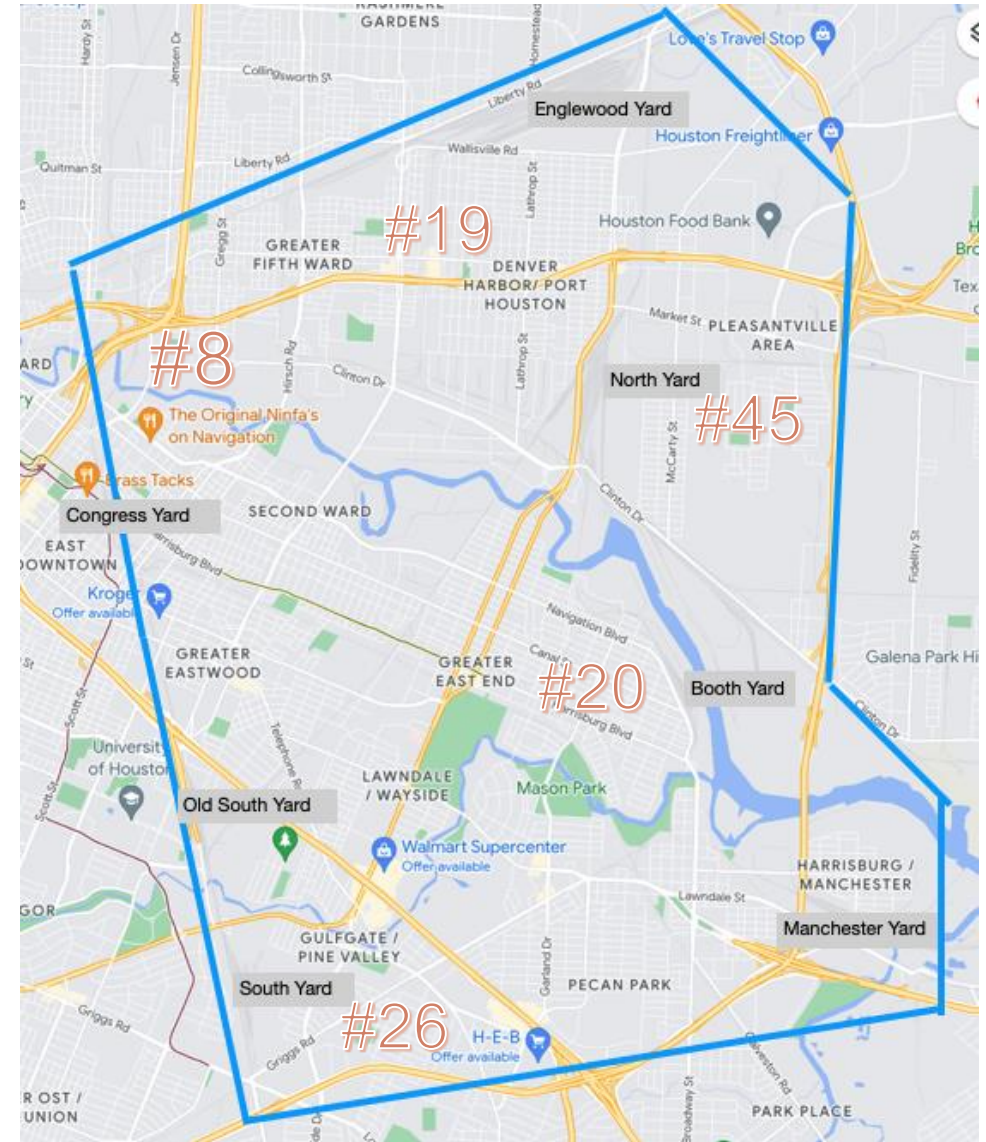
---



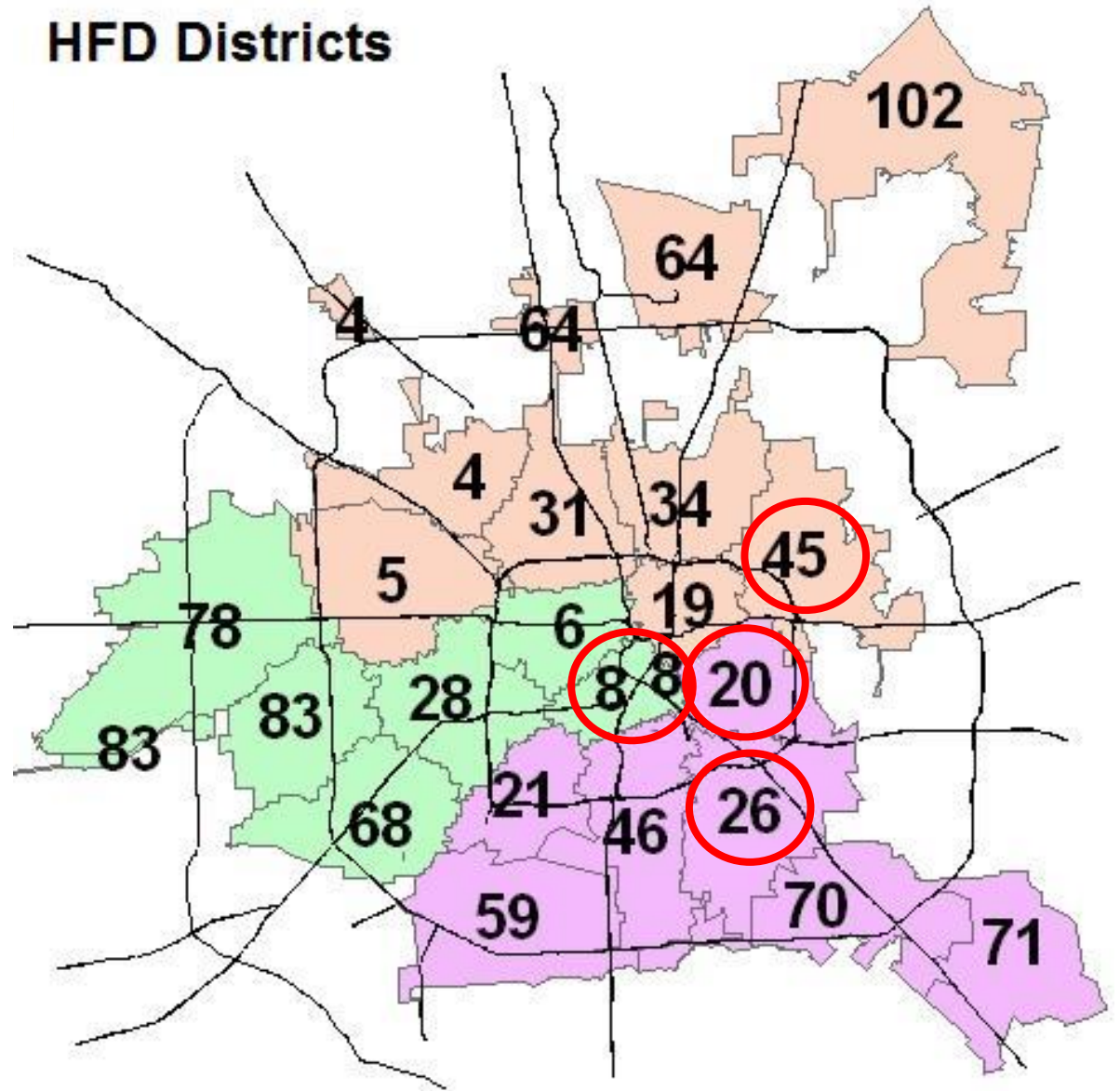
Jack C. Hanagriff, Manager  
Road Safety and Mobility Program  
East End District

# East Houston Focus

- Continue to identify needs and address concerns related to train operations impacting quality of life in East Houston Neighborhoods
- Identify other road safety and mobility concerns within the East Houston area



Total	115
Slow Moving	45
Stopped	70



HFD Delay by Train Report

# Railroad Crossing Sensor Activity

August	Daily Crossing Occupancy	Average Occupancy	Average Daily blockage (hr)	Longest Occupancy
Commerce Street	21	11 Minutes	4 Hours	1.5 Hours (Peak)
Lockwood	7	15 Minutes	2 Hours	3 Hours (Peak)
York	22	4 Minutes	2 Hours	3 Hours (Peak)
Market (5900)	39	4 Minutes	3 Hours	3 Hours (Non-Peak)
Polk (5400)	7	12 Minutes	2 Hours	5.5 Hours (Non-Peak)
Leeland/Cullen	27	7 Minutes	3 Hours	2.5 Hours (Non-Peak)
Hirsch Road	7	16 Minutes	2 Hours	5 Hours (Non-Peak)

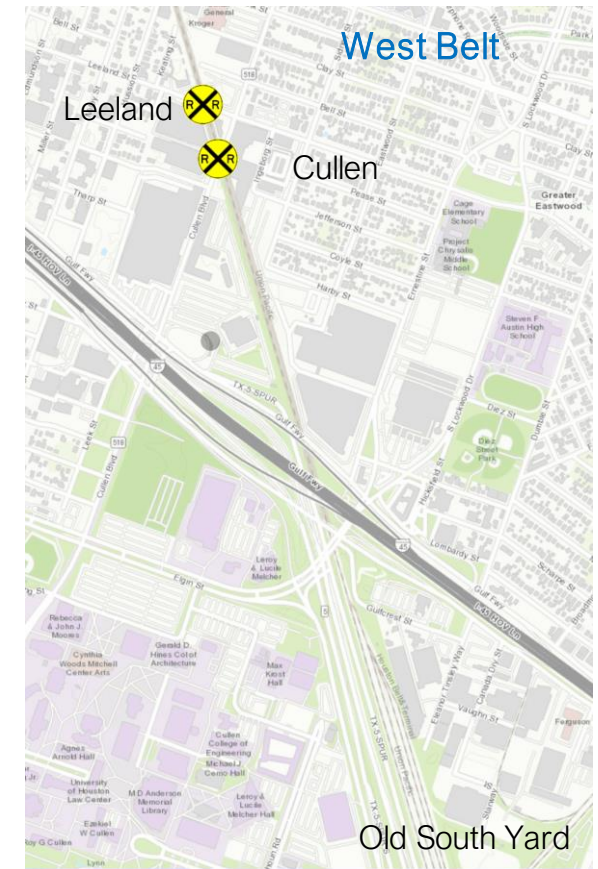
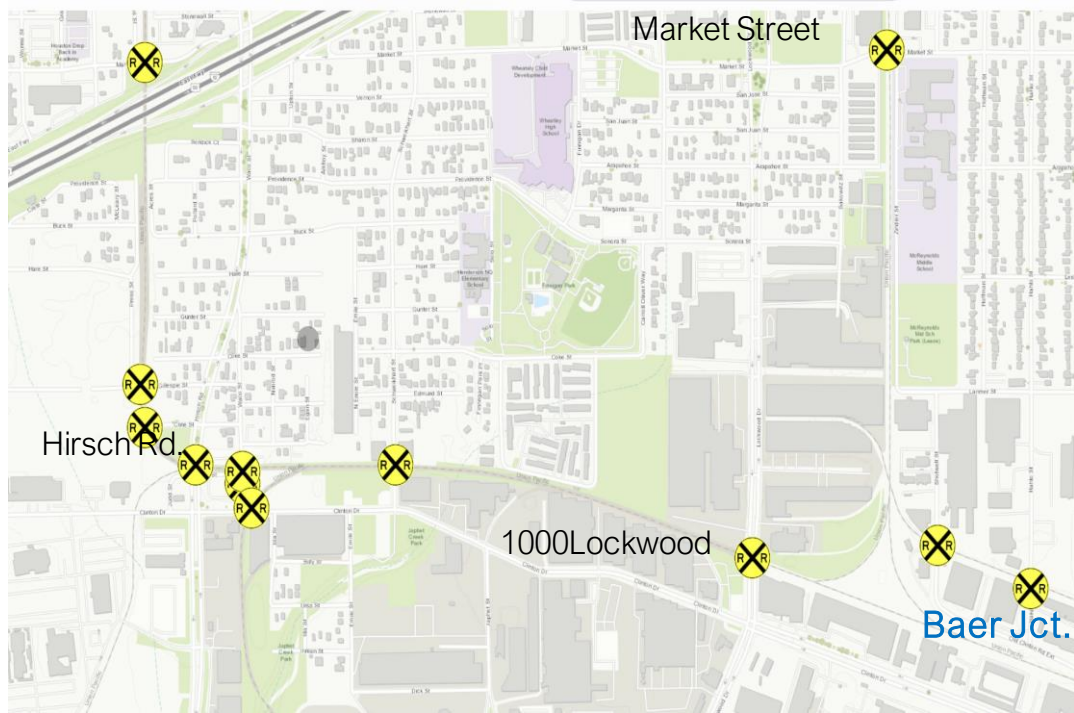
July 2023	Daily Crossing Occupancy	Average Occupancy	Avg. Daily Blockage	Longest Occupancy
Commerce Street	19	10 Minutes	3	2 Hours
Lockwood	6	17 Minutes	2	3 Hours @8:18 PM-07/06/23
York	20	5 Minutes	2	1.5 Hours @1:01 AM-07/03/23
Market (5900)	27	6 Minutes	3	3 Hours @1:27 PM -07/03/23
Polk (5400)	8	10 Minutes	1	3 Hours @6:00 PM-07/25/23
Leeland/Cullen	24	7 Minutes	3	2 Hours @3:09 AM -7/9/23
Hirsch Road	8	16 Minutes	2	7 Hours @7:59 PM -07/14/23

# Focus Crossing List

---

Location	Critical List	Crossing Improvement Study	TX Transportation Committee Blocked Crossing Reduction Strategy
1500 Telephone	Yes	Yes	Yes
5200 Lawndale	Yes	Yes	Yes
700 S. Lockwood	Yes	Yes	Yes
5400 Polk	Yes	Yes	Yes
Leeland/Cullen	Yes	Yes	Yes
1900 Broadway	Yes	Yes	No
400 Hirsch Rd.	Yes	No	Yes
1000 Lockwood	Yes	No	Yes
7600 Lawndale	Yes	No	No
900 S. 75 <sup>th</sup>	Yes	No	No





# Analysis Areas

# Belt Main

	<u>Hirsch Road</u>		
All Traffic	<b>Jan-March</b>	<b>April-June</b>	<b>July-August</b>
<b>Longest Blocakge</b>	Not installed	11-hours	7-hours
<b>Avg. Number of Crossings Occupied</b>		5	6
<b>Avg. Daily Blockage (hr)</b>		3	2
<b>Avg. Blockage Duration (min)</b>		34	17
<b>Peak Times (6-8 AM &amp; 3-6PM)</b>	<b>Jan-March</b>	<b>April-June</b>	<b>July-August</b>
<b>Longest Blocakge</b>	Not Installed	3.5 Hours	1.5 Hours
<b>Avg. Number of Crossing Occupied</b>		3/day	2
<b>Avg. Daily Blockage (hr)</b>		1 hour	< than hour
<b>Avg. Blockage Duration (min)</b>		25 minutes	12 minutes





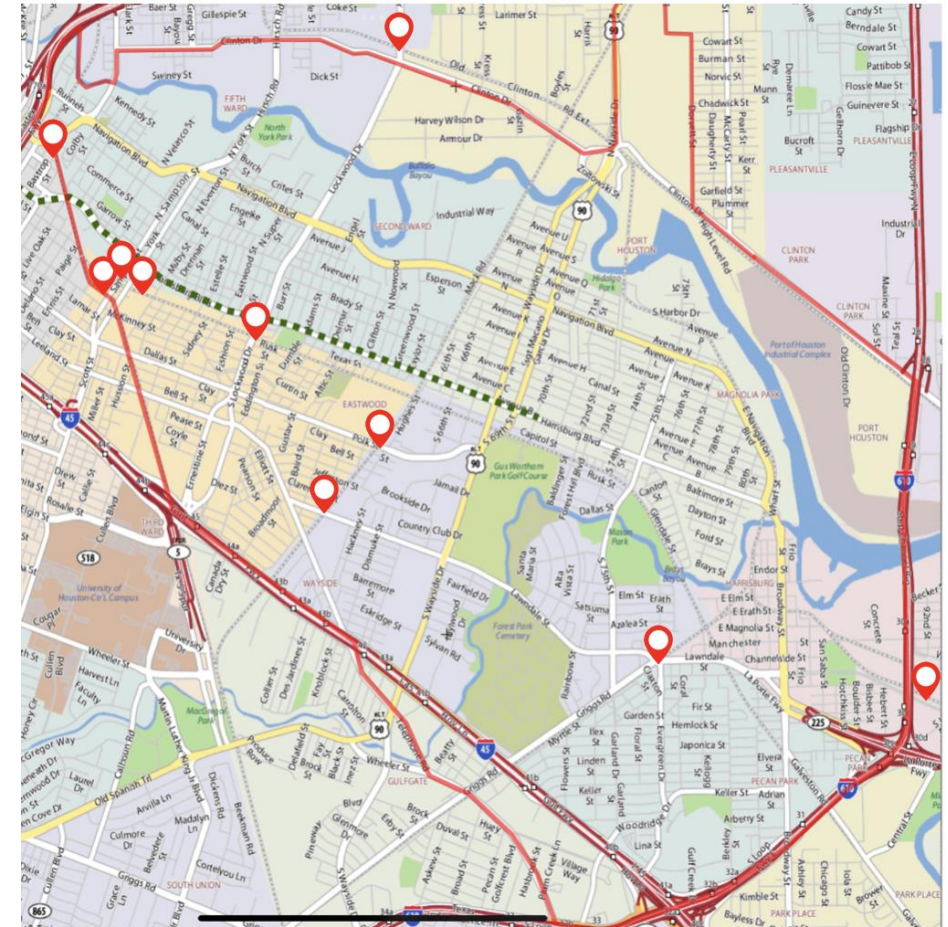
# West Belt

<b>Leeland Cullen</b>				
All Traffic	Jan-March	April-June	July-August	
<b>Longest Blocakge</b>	2.5 Hours	5 Hours	2.5 Hours	
<b>Average number of Occupied Crossings</b>	19	22	20	
<b>Avg. Daily Blockage (hr)</b>	2	3	2	
<b>Avg. Blockage Duration (min)</b>	7 Minutes	7 Minutes	7 Minutes	
<i>Peak Times (6-8 AM &amp; 3-6PM)</i>				
	Janu-March	April - June	July - August	
<b>Longest Blocakge</b>	2.5 hours	3 hours	1.5 Hours	
<b>Avg. Number of Occupied Crossings</b>	7	8/day	6	
<b>Avg. Daily Blockage (hr)</b>	1	1	1	
<b>Avg. Blockage Duration (min)</b>	11 minutes	8 minutes	8 Minutes	

# Smart Railroad Cameras & Sensors



- Continue to Monitor 18 Locations
- Scale the Project Regionally (Harris County & Fort Bend County)
- Testing Data at Transtar
- Piloting Advanced Warning Sign



# Transportation Safety Initiatives

A collaborated effort with transportation safety organizations and academia to implement a road and rail safety awareness strategy for the East Houston Area

## Current Initiatives:

- Safe Streets For All - Safety Action Plan
- Texas A&M Crossing Bypass -Started
- US Road Assessment Program – assess and prioritize transportation safety and infrastructure conditions in the East End District. - Started
- Develop a Road & Rail Safety Tool Kit for neighborhood schools, community centers, & clinics



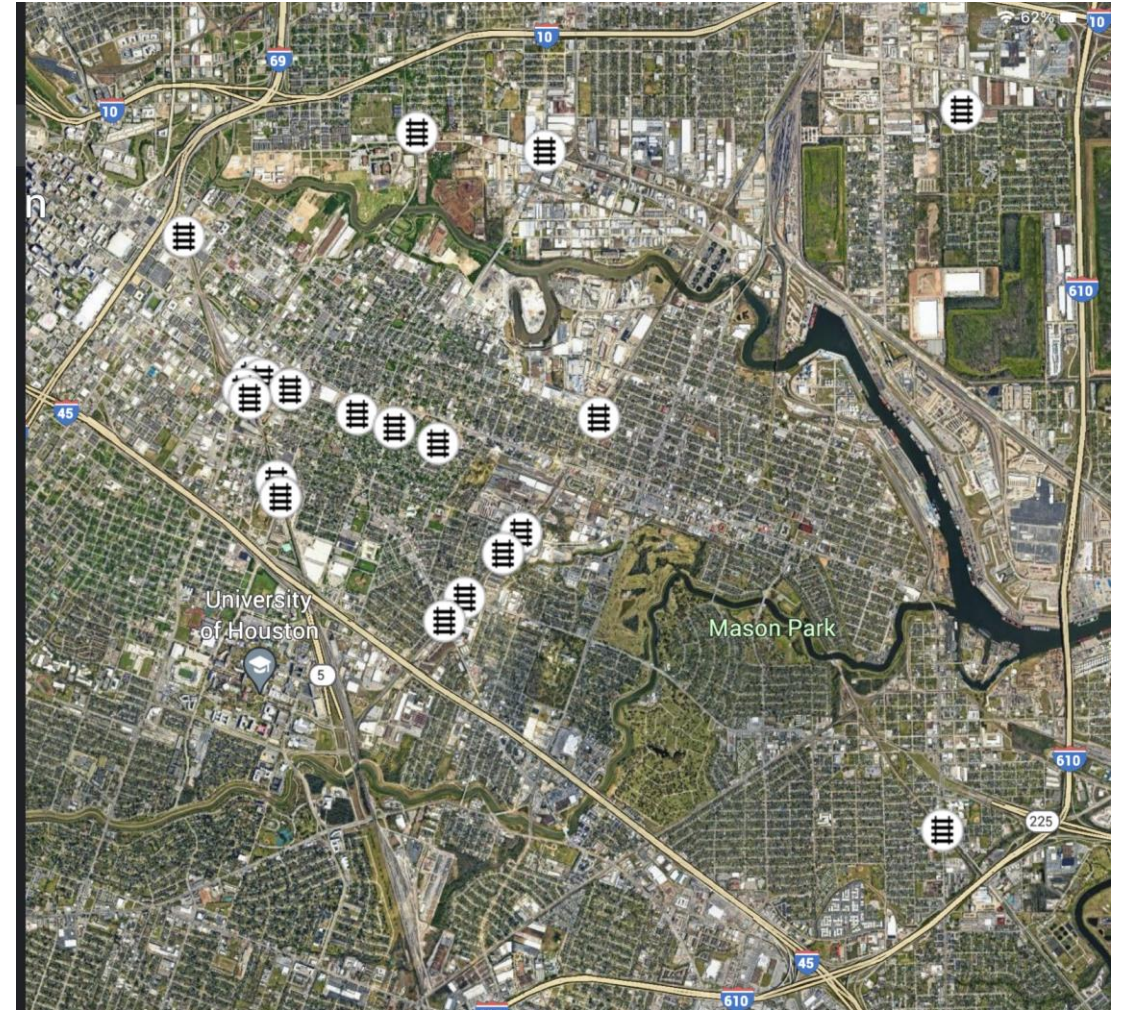


# Texas A&M Capstone

Identify alternate routes and evaluate treatments that can assist motorists in by-passing Blocked Railroad Crossings.

## Objectives:

- Reduce traffic congestion and minimize “boxed in” motorist
- Manage driver expectation by offering wayfinding signage along alternate routes
- Reduce unsafe activities, e.g., racing the train, high speed driving, and etc.
- Deliver traffic calming opportunities through route guidance



# Transportation Groups in Action

---

- Rail Safety Task Force
- Road Safety Resource Group
- Safety Sync Up
- EED Bicycle Advisory Group
- Pedestrian Safety Group
- Vision Zero Action Committee

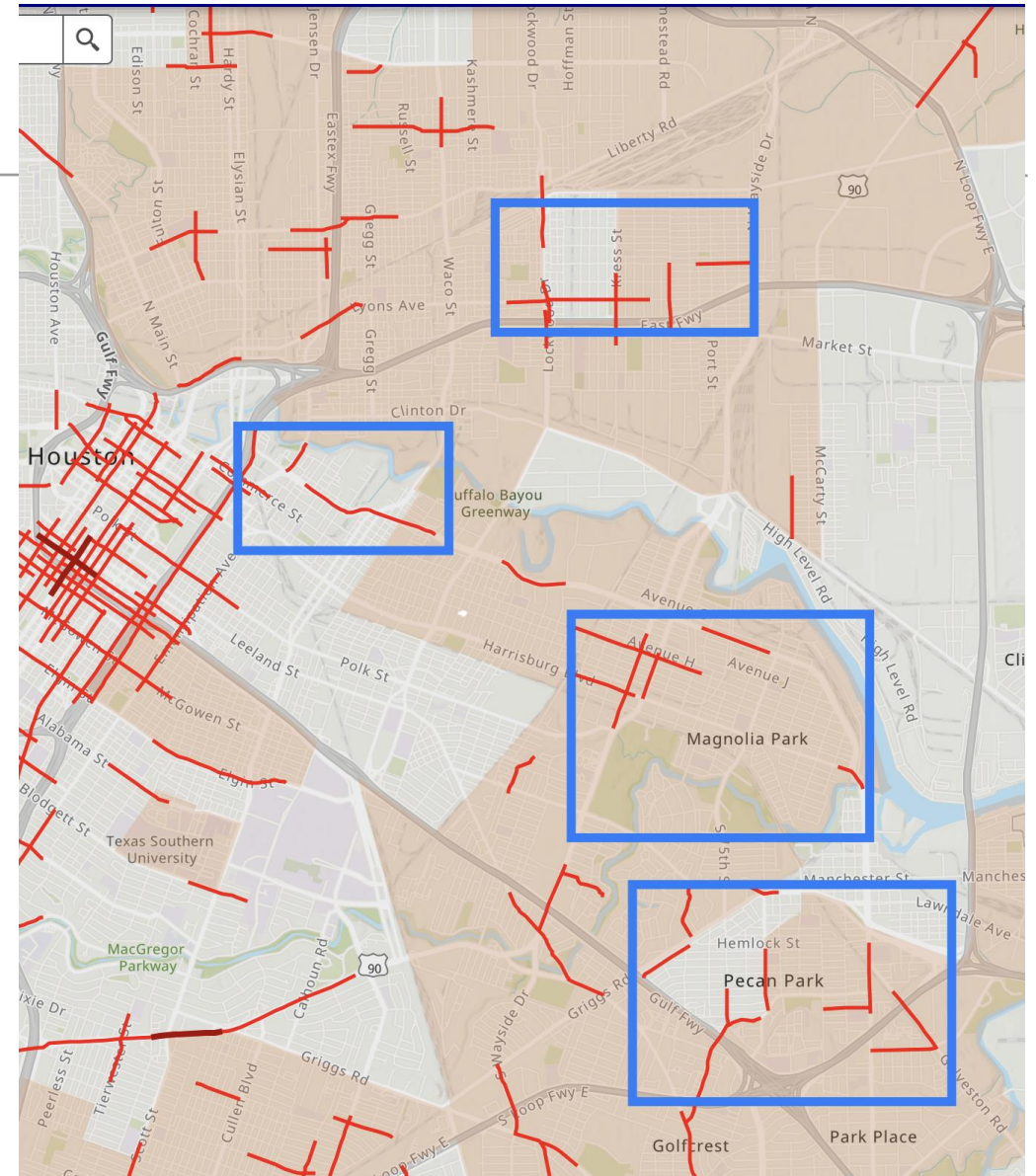




# Community Ties

Monetary Award to remove pedestrian barriers related to vegetation, trash, other debris that impede the use of sidewalks and other paths

- East End District (2nd Ward, Magnolia Park, Pecan Park, Possible 5<sup>th</sup> Ward)
- Neighborhoods in the High Injury Network
- Routes to school, parks, centers and clinics





Thank You

---

Jack C. Hanagriff, Manager  
Road Safety and Mobility Program  
Email: [Jack@eastenddistrict.com](mailto:Jack@eastenddistrict.com)