

# Community Mobility and Safety Initiative

---

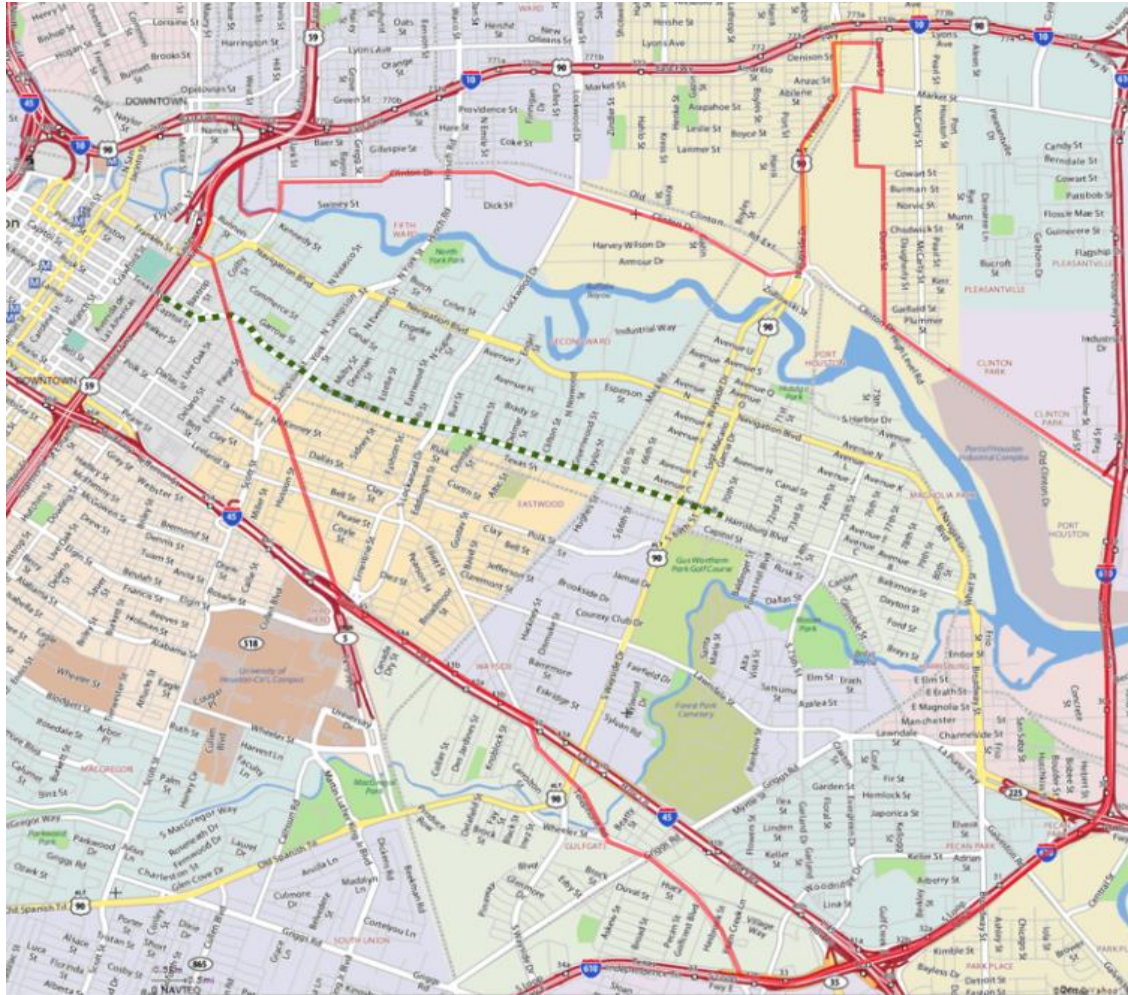


Veronica Chapa-Gorczyński  
President

Jack Hanagriff, Director  
Transportation Safety Program

Trinity Parker  
Safe Streets Project Manager

# East End District



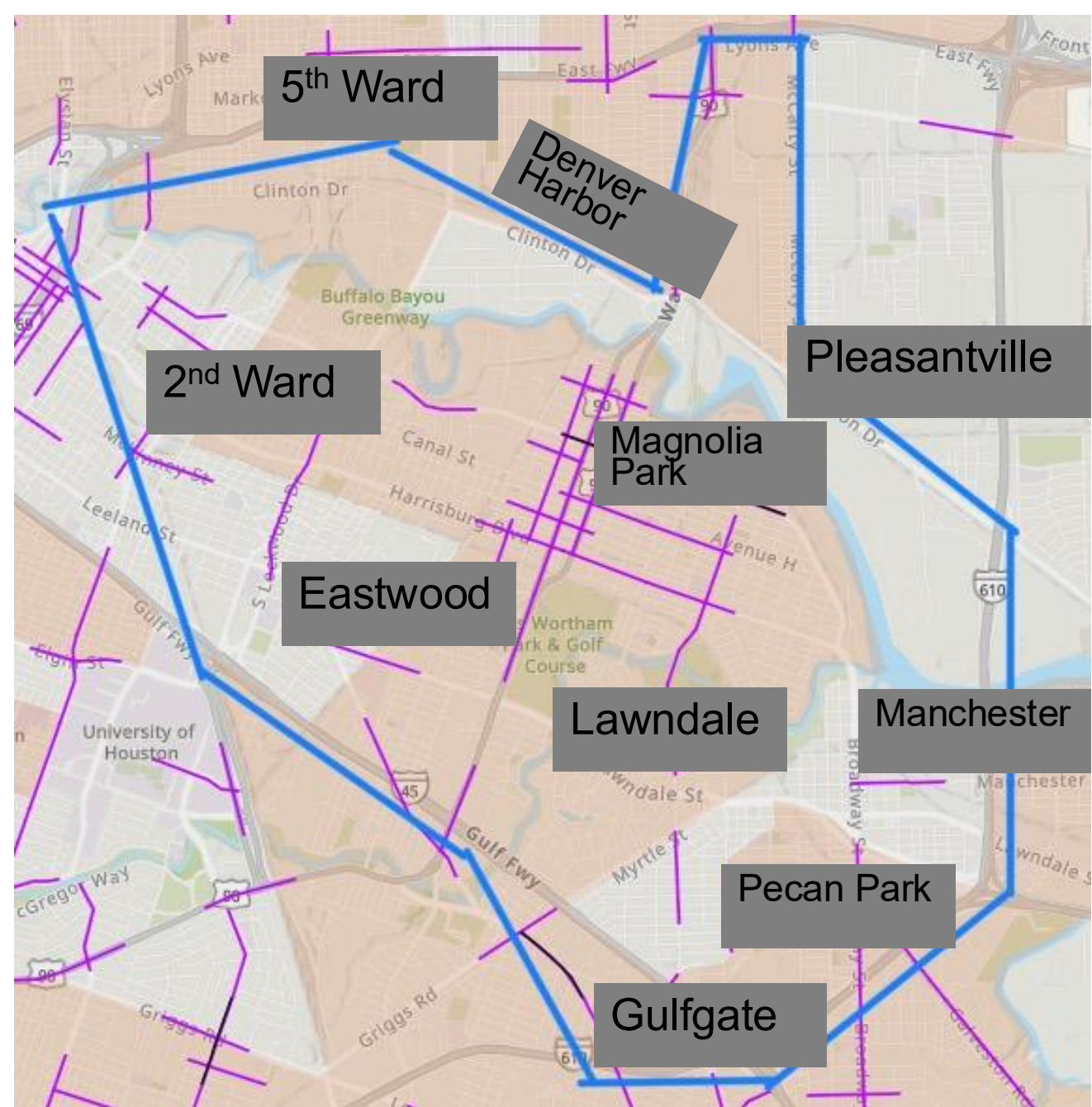
The East End District provides services to support public safety programs, graffiti abatement, maintenance on major thoroughfares, and disposal of illegally dumped trash

# EED Injury Network

The **High Injury Network (HIN)** represents 9% of Houston streets which account for 58% of traffic deaths and serious injuries

## Main Focus Areas:

- Second Ward
- Magnolia Park
- Pecan Park



# Community Mobility and Safety Initiative

The goal of this strategy is to use strategic assessments, education, and data-informed interventions to enhance traffic safety in the District; focusing on commuting to and from schools, clinics, grocery stores, and gathering places.

The objectives of this program are to:

- Assess and prioritize risk areas within high-risk transportation zones
- Track and improve road conditions
- Community engagement
- Resource allocation
- Awareness and education campaigns
- Program monitoring



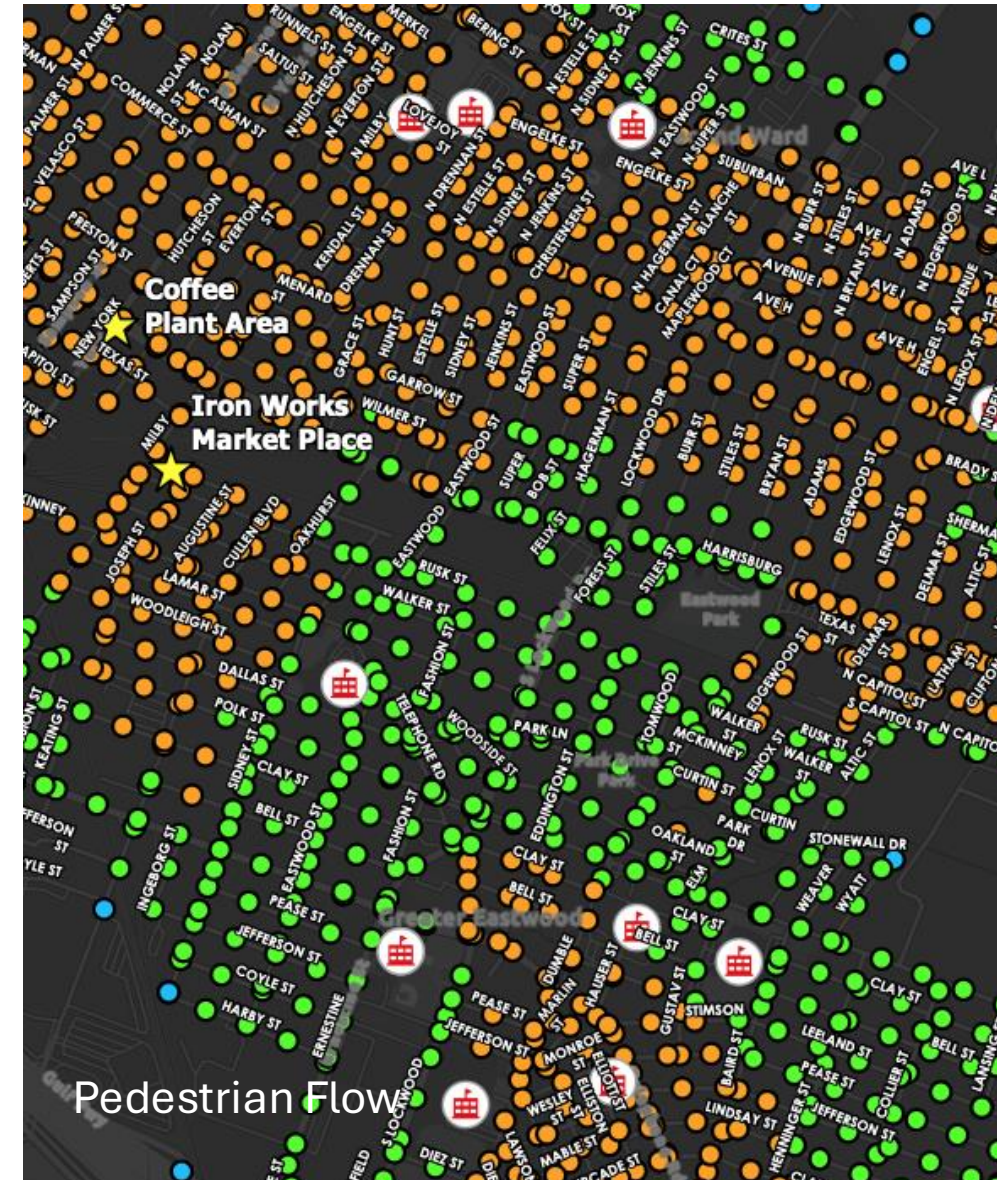
# Safer Roads

## US Road Assessment Program

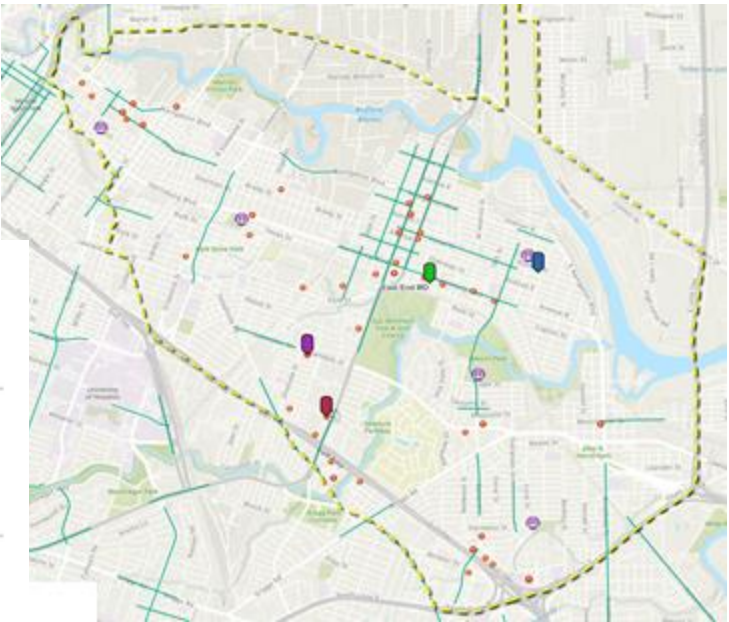
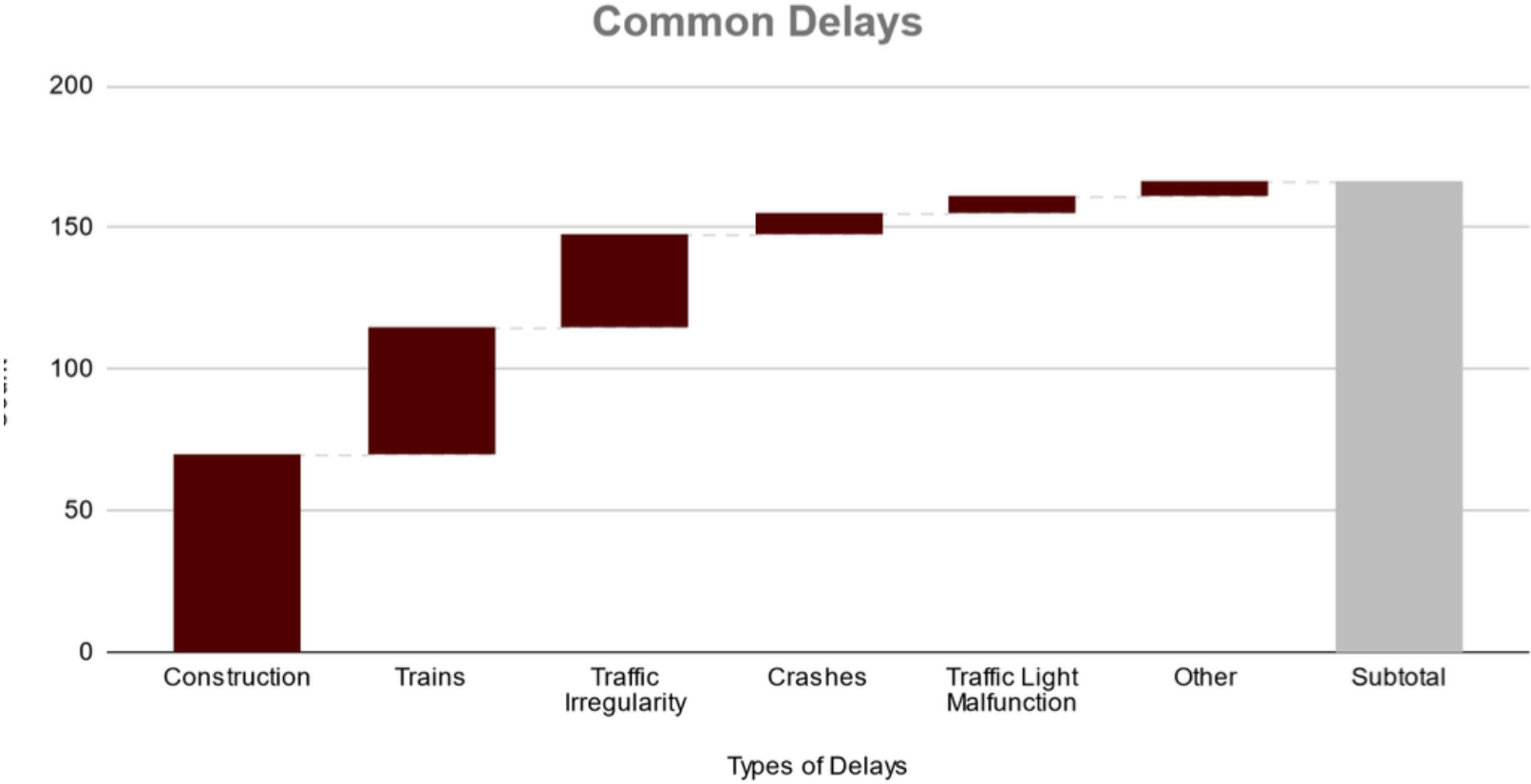
A collaborative effort with the Roadway Safety Foundation and Iowa State University to assess the 300 consecutive miles of primary and secondary roads in the District.

This process of using innovative and proactive toll will assist in generating data-driven solutions for reducing hazards and crashes throughout the entire East End District.

- Analyzed 300 consecutive miles of primary and secondary roads
- Proactive risk assessment: Using video data and predictive risk models developed through decades of global research, usRAP allows transportation departments to focus



# Safe Route to Clinic Study





**Legend**

- High Accident areas (Red circle)
- Moderate Accident areas (Yellow circle)
- Low Accident areas (Green circle)
- High Injury Network (Pink circle)
- Streets Surveyed (Red line)

**Schools and Areas:**

- TIERINA ELEMENTARY
- FRANKLIN ELEMENTARY
- BAKER-RIPLEY
- KIPP EXPLORE ACADEMY
- DAVILA ELEMENTARY

**Geographic Features:**

- Gulf Freeway (I-610)
- Harris Bayou
- Brays Bayou
- Clinton Park
- Clinton View
- Clinton Dr
- Clinton St
- Clinton Ave
- Clinton Rd
- Clinton Blvd
- Clinton Way
- Clinton Ct
- Clinton Pl
- Clinton Ln
- Clinton Dr
- Clinton St
- Clinton Ave
- Clinton Rd
- Clinton Blvd
- Clinton Way
- Clinton Ct
- Clinton Pl
- Clinton Ln

**Other Labels:**

- CHINATOWN
- Eastwood
- Pine View Manor
- Forest Hill
- Mason Park
- Idylwood
- Riverview
- University Oaks
- MACGREGOR
- Microsoft Bing
- © 2024 TomTom
- © 2024 Microsoft Corporation
- © OpenStreetMap
- Terms

- Used SR4S to determine safety rating of roads
- Provide recommendations for safety improvements
- Knowledge transfer to East End District



# Pedestrian Safety



		Apr-24	24-May	24-Jun	24-Jul	20-Aug	24-Sep	24-Oct	"Nov 2024
location	Street								
859527H	Altic St		1	20	2		1	1	10
288221A	Cullen blvd	9	15	21	8	3	7	2	7
859524M	Dumble st	6	3	21	8		2	2	9
859522Y	Eastwood	16		27	6	8	3	3	8
755640L	Hirsch	1		14	5	3	2		
288224V	Leeland St	10	13	23	8	4	7	3	7
859523F	Lockwood St	8	3	26	12		5	2	10
288227R	McKinney St	9	12	17	6	3	5	3	7
859518J	Milby St	2		20	3		2		12
288227R	Milby St			2					
288226J	Milby St	4	9	19	6	3	8	3	6
859521S	Oakhurst St	7		21	5		3	1	9
859519R	Sampson St			2					6
859516V	Sampson St	4		13			2		2
288229E	Sampson St	3	9	17	8	1	3	2	
758545B	Silver St	4			8	3			3
288228X	York St	4	8	17	7	1	3	2	6
859517C	York St	4		13	1		2		2



# Implementation Framework

## **Data Collection & Risk Assessment**

- **Mapping & Inventory**
  - Finalize mapping of 50+ schools and community sites.
  - Prioritize based on:
    - Proximity to rail lines
    - Placement within the Houston Vision Zero High Injury Network (HIN)
    - Crash data
    - Congestion and infrastructure deficits
- **SR4S and HIN-integrated tools Rating Implementation**
  - Train PTA members, school staff, or community volunteers on the iRAP SR4S and HIN-integrated tools app
  - Each school completes surveys and submits coded segments for scoring
  - Use heatmaps to visually represent danger zones
- **Community Surveys**
  - Deploy Link Houston's school and parent surveys.
  - Record qualitative data (e.g., anecdotes of “creative driving,” unsafe rail crossings).

# Roles and Guidelines

**Transportation Safety Coordinator-** foster and maintain relationship with schools, clinics, and local gathering points through data collection operations.

- Assign data collection zones and priority locations
- Train data collectors on CMSI safety goals, survey administration, and observation logging
- Support capstones and other community studies

**Program Aide-** maintain communication with community members to gather transportation safety-related input and/or feedback.

- Distribute bilingual surveys to residents near schools, clinics, bus stops, and community centers
- Conduct community interviews to gather comments about safety concerns
- Observe and document infrastructure concerns, such as missing signs or unsafe rail crossings
- Support capstones and other community studies

# Community Engagement Displays

## Community Engagement-

Safety Displays will be placed in schools, clinics, and other local gathering points. Will contain informational pamphlets focused on transportation safety and a QR Code for feedback.

- What to do when you approach a rail crossing
- How to safely operate a crosswalk/intersection
- Car seat safety (rules and regulations)

Metal Display w/slot for QR Code



Cardboard Display w/EED Design and QR Code





# Next Steps

- Pedestrian Locations
- Prioritize schools in close proximity to rail crossings
- Conduct schools survey
- Rail Safety Month (September)

# Discussion

- How can we better inform the community?
- How can we effectively use shared resources?
- Are there any current or upcoming projects you want to see implemented?
- How can we support you?

# Safety is our priority, it takes the help of each of you!

---



Visit us at [eastenddistrict.com](http://eastenddistrict.com)

## Thank You!