

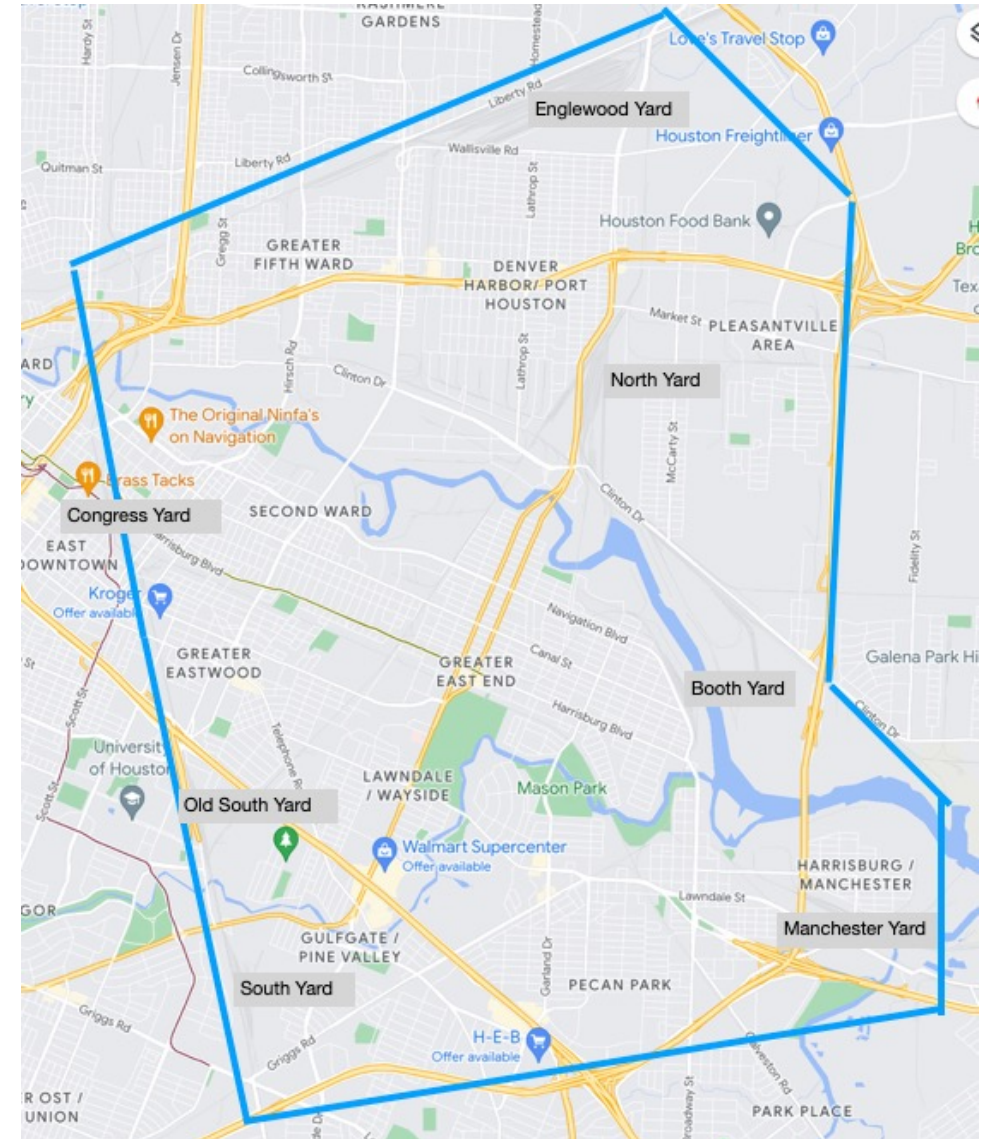


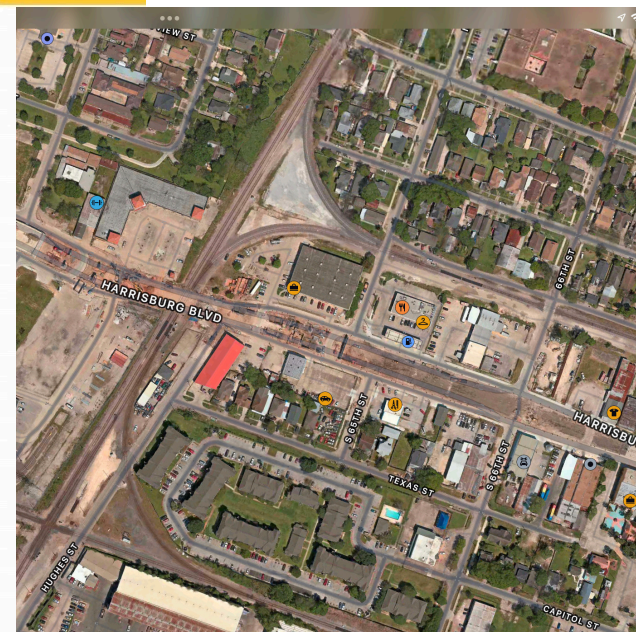
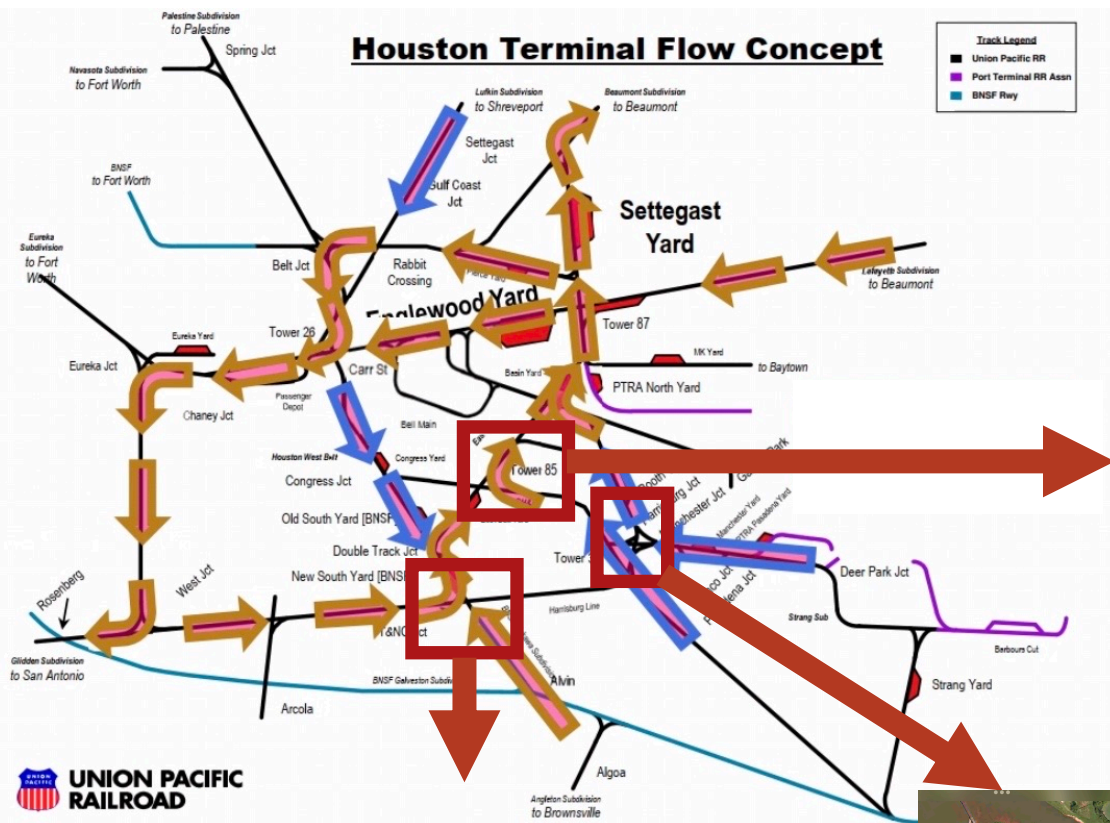
Railroad Safety and mobility

Jack C. Hanagriff, Coordinator
Railroad Safety and Mobility
East End District

East Houston Focus

- Develop strategies to measure needs and direct resources to neighborhoods impacted by railroad operations
- Identify other road safety and mobility concerns within the East Houston area

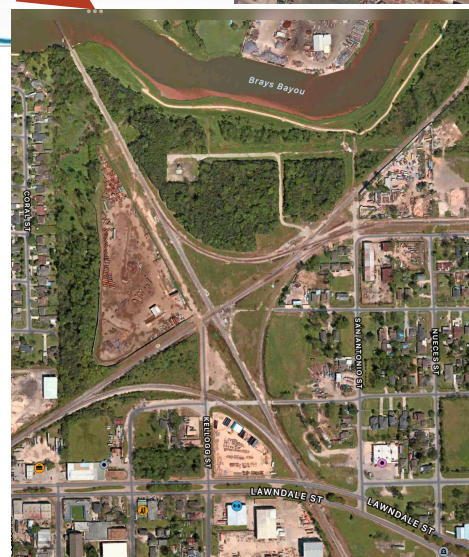




Tower #85
Harrisburg@Hughes

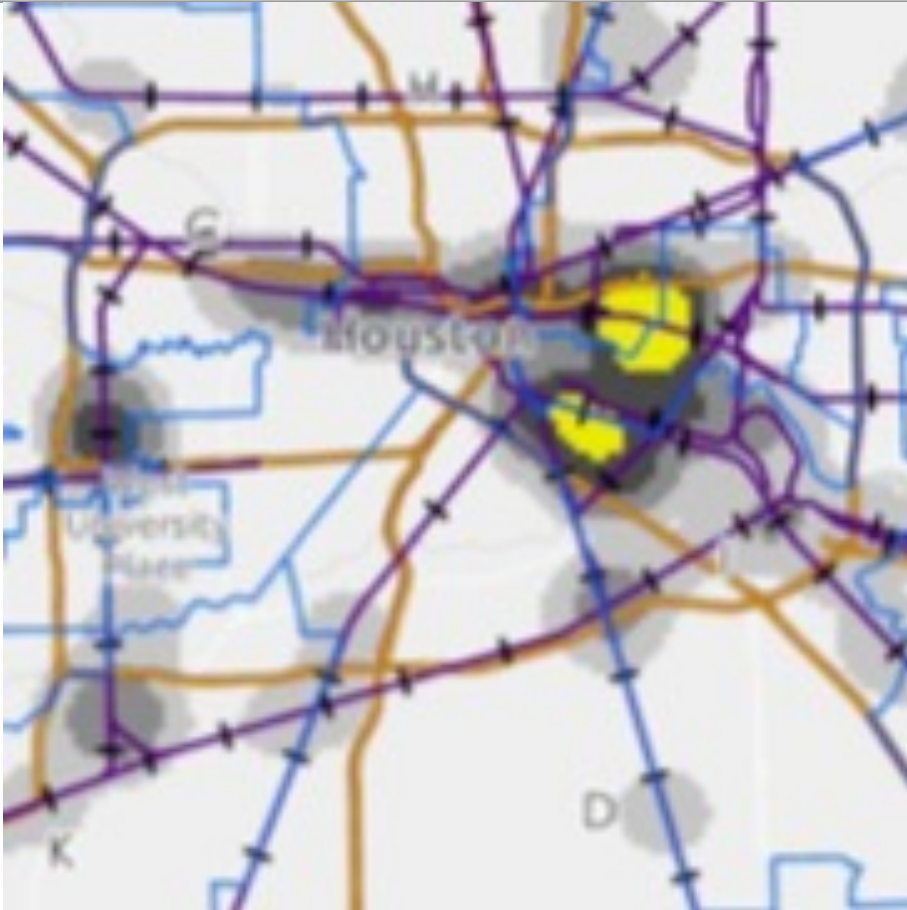


T&NO Junction
Griggs@Mykawa



Katy Neck
Lawndale@Evergreen

2021 Reported Blockages



HPD responds to an average of
36 Blocked Crossing Call per
month

HFD reported over 100 delays by
train/month

Rail Corridor Collaborative

- Meet monthly with local railroads to discuss neighborhood concerns
- Review Houston Emergency Response Delays
- Discuss mechanisms to reduce railroad impacts to safety and mobility



Rail Safety Taskforce



Second
Ward

Fifth Ward



Eastwood

Denver Harbor



Magnolia Park



Pleasantville



Pecan Park



South Park

Lawndale/Wayside

Manchester

Gulfgate/Pine Valley



OST/South Union

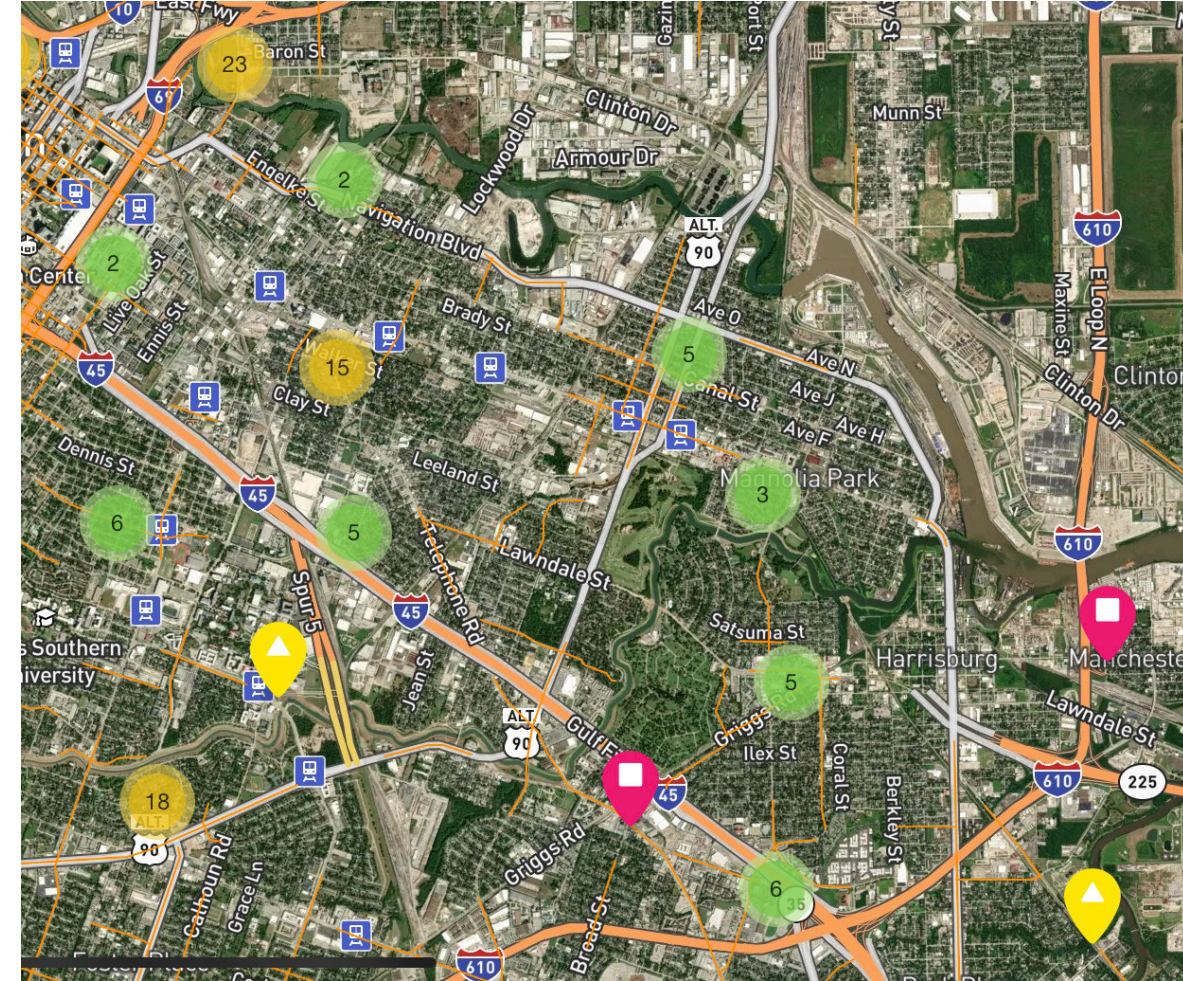


Have Representation

- Meet with community and city representatives from neighborhoods affected by railroad operations
- Identify and prioritize concerns
- Guide district efforts for developing safety and mobility strategies

Road Safety Treatments

- Focus Crossing List
 - 31 Crossings of Concern (Houston Area)
 - 10-East End
- Tracking Roadway Concerns in East Houston
 - Blocked Crossings
 - Sight Distance Limitations
 - Dangerous Intersections
 - Bike/ Pedestrian Access

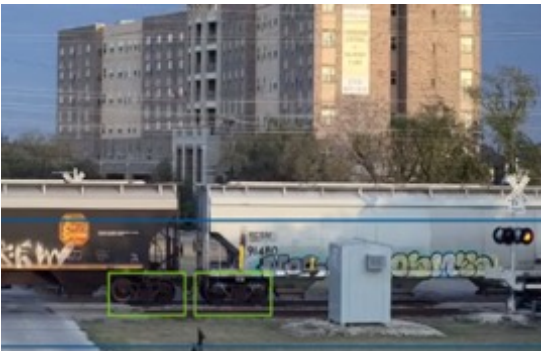


<https://www.letstalkhouston.org/vision-zero/maps/vision-zero-map-tool>

Smart Railroad Sensors



- Support the Houston Smart City Program
- Assist in identifying crossings impacted by railroad operations
- Leverage technology solutions to monitor train activity



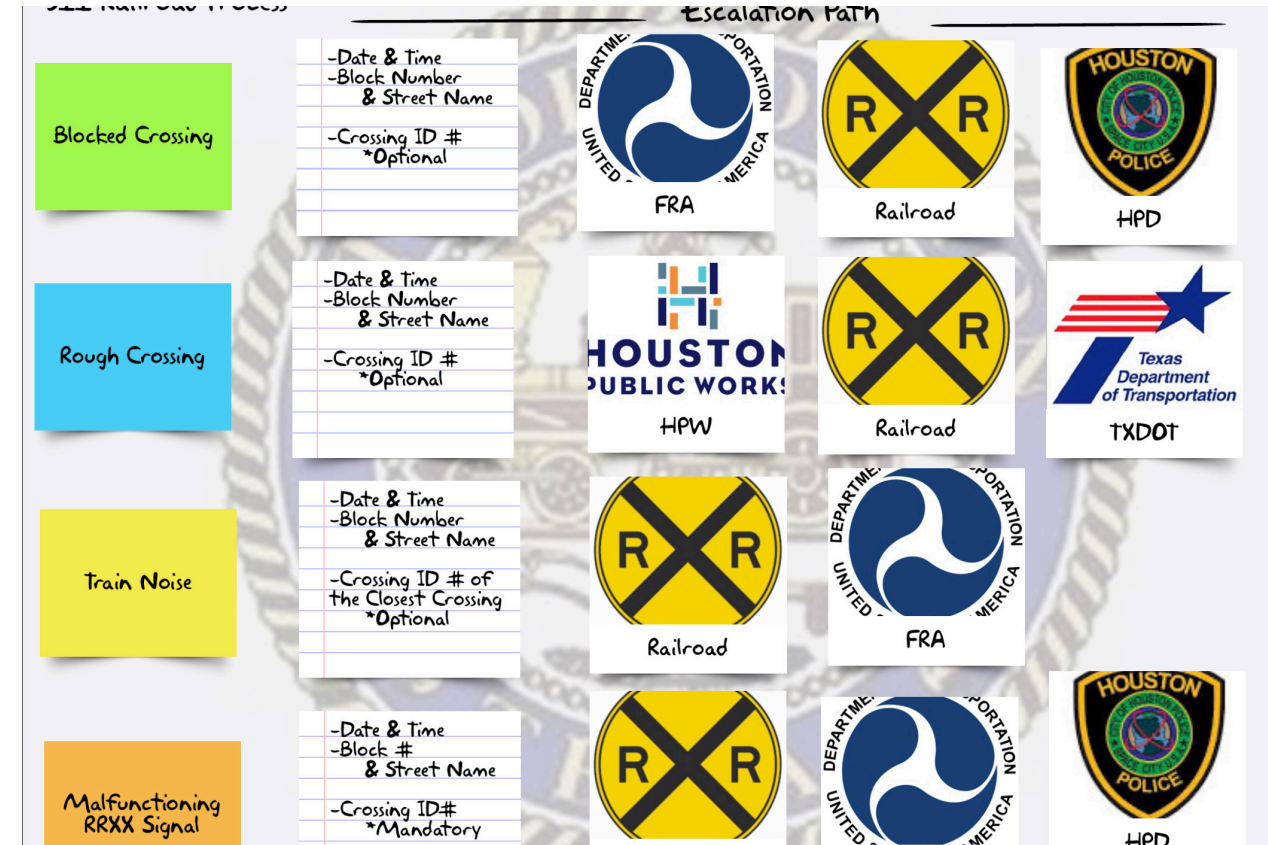
Federal Railroad Administration (FRA)

- Provided Subject Matter Expertise on a visit from the FRA
- Conducted site visits for the York/Sampson Crossings and S. Lockwood
- Highlighted Emergency Response delays caused by train operations
- Requested resources to support reducing community impacts caused by railroad operations



311 Update

- Collaborate with city personnel to simplify the 311 process
- Create a Railroad Concern Service Request
- Implement a mechanism to send railroad concerns to the appropriate entities



East End Web Page

- Added a Railroad Safety and Mobility Tab to the East End Web Page
- Post monthly updates on activities
- Provide helpful links

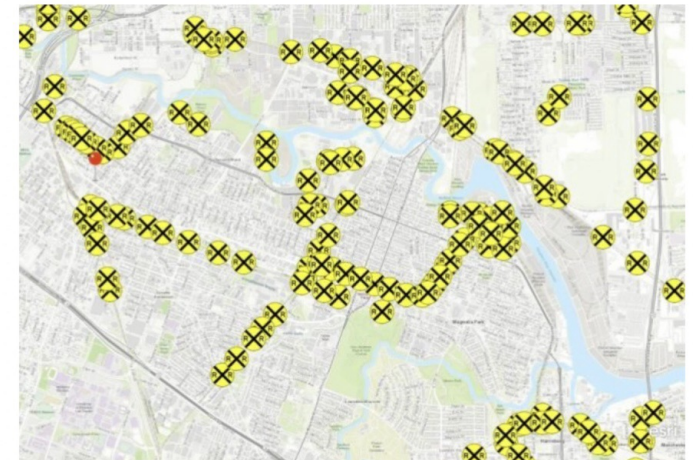
<https://www.eastenddistrict.com>



RAIL SAFETY AND MOBILITY

Above: Downtown Houston as seen from the East End District.

As a community effort to address transportation challenges, the East End District is implementing a comprehensive strategy focusing on transportation safety, quality of life and mobility throughout the district. Key initiatives include: identifying traffic flow impediments such as blocked railroad crossings, damaged crossings, inadequate pedestrian access, and malfunctioning traffic control devices.





Thank you

jack@eastenddistrict.com

Phone-713-928-9916